

GALR3 Polyclonal Antibody

Description

Product type	Primary Antibody
Code	BT-AP03460
Host	Rabbit
Isotype	IgG
Size	20ul, 50ul, 100ul
Immunogen	The antiserum was produced against synthesized peptide derived from human GALR3. AA range:291-340
Mol wt	39573
Species reactivity	Human
Clonality	Polyclonal
Recommended application	WB, IF, ELISA
Concentration	1 mg/ml
Full name	GALR3 Antibody
Synonyms	GALR3; GALNR3; Galanin receptor type 3; GAL3-R; GALR-3

This product is for research use only, not for use in human, therapeutic or diagnostic procedure.

Background

The neuropeptide galanin modulates a variety of physiologic processes including cognition/memory, sensory/pain processing, hormone secretion, and feeding behavior. The human galanin receptors are G protein-coupled receptors that functionally couple to their intracellular effector through distinct signaling pathways. GALR3 (galanin receptor 3) is found in many tissues and may be expressed as 1.4 -, 2.4 - and 5-kb transcripts.

Recommended Dilution

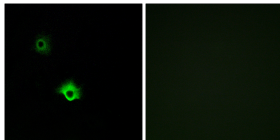
WB: 1: 500 - 1: 2000

IF: 1: 200 - 1: 1000

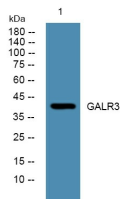
ELISA: 1: 40000

Not yet tested in other applications.

Images



Immunofluorescence analysis of A549 cells, using GALR3 Antibody. The picture on the right is blocked with the synthesized peptide.



Western blot analysis of lysates from KB cells, primary antibody was diluted at 1:1000, 4° over night

Storage

-20°C for one year

501 Changsheng S Rd, Nanhu Dist, Jiaxing, Zhejiang, China

Tel: 86 21 31007137 | E-mail: save@bt-laboratory.com | www.bt-laboratory.com