

## GAP1-InsP4 BP Polyclonal Antibody

### Description

<b>Product type</b>	Primary Antibody
<b>Code</b>	BT-AP03462
<b>Host</b>	Rabbit
<b>Isotype</b>	IgG
<b>Size</b>	20ul, 50ul, 100ul
<b>Immunogen</b>	The antiserum was produced against synthesized peptide derived from human RASA3. AA range:247-296
<b>Mol wt</b>	95913
<b>Species reactivity</b>	Human, Mouse, Rat
<b>Clonality</b>	Polyclonal
<b>Recommended application</b>	WB, ELISA
<b>Concentration</b>	1 mg/ml
<b>Full name</b>	GAP1-InsP4 BP Antibody
<b>Synonyms</b>	RASA3; Ras GTPase-activating protein 3; GAP1(IP4BP); Ins P4-binding protein

**This product is for research use only, not for use in human, therapeutic or diagnostic procedure.**

### Background

RASA3 encodes a protein that binds inositol 1,3,4,5-tetrakisphosphate and stimulates the GTPase activity of Ras p21. Ras GTPase-activating protein 3 functions as a negative regulator of the Ras signalling pathway. It is localized to the cell membrane via a pleckstrin homology (PH) domain in the C-terminal region. Alternative splicing results in multiple transcript variants.

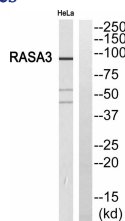
### Recommended Dilution

WB: 1: 500 - 1: 2000

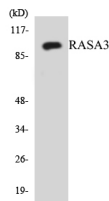
ELISA: 1: 40000

Not yet tested in other applications.

### Images



Western blot analysis of RASA3 Antibody. The lane on the right is blocked with the RASA3 peptide.



Western blot analysis of the lysates from HUVEC cells using RASA3 antibody.



Western Blot analysis of various cells using GAP1-InsP4 BP Polyclonal Antibody

## Storage

-20°C for one year

501 Changsheng S Rd, Nanhu Dist, Jiaxing, Zhejiang, China

Tel: 86 21 31007137 | E-mail: [save@bt-laboratory.com](mailto:save@bt-laboratory.com) | [www.bt-laboratory.com](http://www.bt-laboratory.com)