

GAS3 Polyclonal Antibody

Description

Product type	Primary Antibody
Code	BT-AP03472
Host	Rabbit
Isotype	IgG
Size	20ul, 50ul, 100ul
Immunogen	The antiserum was produced against synthesized peptide derived from human PMP22. AA range:111-160
Mol wt	17891
Species reactivity	Human, Mouse, Rat
Clonality	Polyclonal
Recommended application	WB, IHC-p, ELISA
Concentration	1 mg/ml
Full name	GAS3 Antibody
Synonyms	PMP22; GAS3; Peripheral myelin protein 22; PMP-22; Growth arrest-specific protein 3; GAS-3

This product is for research use only, not for use in human, therapeutic or diagnostic procedure.

Background

PMP22 (peripheral myelin protein 22) encodes an integral membrane protein that is a major component of myelin in the peripheral nervous system. Studies suggest two alternately used promoters drive tissue-specific expression. Various mutations of PMP22 are causes of Charcot-Marie-Tooth disease Type IA, Dejerine-Sottas syndrome, and hereditary neuropathy with liability to pressure palsies. Alternative splicing results in multiple transcript variants.

Recommended Dilution

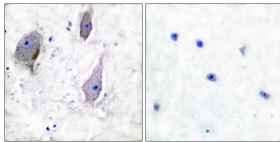
WB: 1: 500 - 1: 2000

IHC: 1: 100 - 1: 300

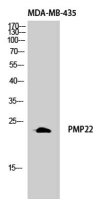
ELISA: 1: 40000

Not yet tested in other applications.

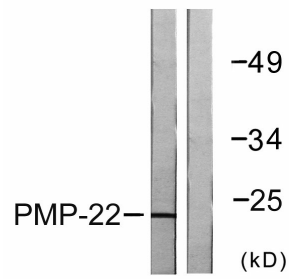
Images



Immunohistochemistry analysis of paraffin-embedded human brain tissue, using PMP22 Antibody. The picture on the right is blocked with the synthesized peptide.



Western Blot analysis of MDA-MB-435 cells using GAS3 Polyclonal Antibody diluted at 1:1000



Western blot analysis of lysates from MDA-MB-435 cells, using PMP22 Antibody. The lane on the right is blocked with the synthesized peptide.

Storage

-20°C for one year

501 Changsheng S Rd, Nanhu Dist, Jiaxing, Zhejiang, China

Tel: 86 21 31007137 | E-mail: save@bt-laboratory.com | www.bt-laboratory.com