

Gas6 Polyclonal Antibody

Description

Product type	Primary Antibody
Code	BT-AP03474
Host	Rabbit
Isotype	IgG
Size	20ul, 50ul, 100ul
Immunogen	The antiserum was produced against synthesized peptide derived from human GAS6. AA range:291-340
Mol wt	79677
Species reactivity	Human
Clonality	Polyclonal
Recommended application	WB, IHC-p, ELISA
Concentration	1 mg/ml
Full name	Gas6 Antibody
Synonyms	GAS6; AXLLG; Growth arrest-specific protein 6; GAS-6; AXL receptor tyrosine kinase ligand

This product is for research use only, not for use in human, therapeutic or diagnostic procedure.

Background

GAS6 encodes a gamma-carboxyglutamic acid (Gla)-containing protein, Growth arrest-specific protein 6, thought to be involved in the stimulation of cell proliferation. GAS6 is frequently overexpressed in many cancers and has been implicated as an adverse prognostic marker. Elevated protein levels are additionally associated with a variety of disease states, including venous thromboembolic disease, systemic lupus erythematosus, chronic renal failure, and preeclampsia.

Recommended Dilution

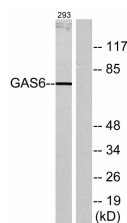
WB: 1: 500 - 1: 2000

IHC: 1: 100 - 1: 300

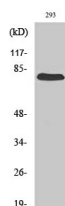
ELISA: 1: 40000

Not yet tested in other applications.

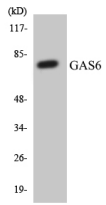
Images



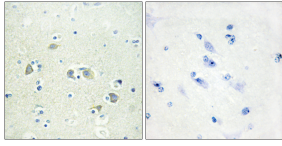
Western blot analysis of lysates from 293 cells, using GAS6 Antibody. The lane on the right is blocked with the synthesized peptide.



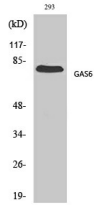
Western Blot analysis of 293 cells using Gas6 Polyclonal Antibody diluted at 1:500



Western blot analysis of the lysates from HT-29 cells using GAS6 antibody.



Immunohistochemistry analysis of paraffin-embedded human brain tissue, using GAS6 Antibody. The picture on the right is blocked with the synthesized peptide.



Western Blot analysis of various cells using Gas6 Polyclonal Antibody diluted at 1:500

Storage

-20°C for one year

501 Changsheng S Rd, Nanhu Dist, Jiaxing, Zhejiang, China

Tel: 86 21 31007137 | E-mail: save@bt-laboratory.com | www.bt-laboratory.com