

Gasdermin C Polyclonal Antibody

Description

Product type	Primary Antibody
Code	BT-AP03476
Host	Rabbit
Isotype	IgG
Size	20ul, 50ul, 100ul
Immunogen	The antiserum was produced against synthesized peptide derived from human GSDMC. AA range:109-158
Mol wt	57662
Species reactivity	Human
Clonality	Polyclonal
Recommended application	WB, ELISA
Concentration	1 mg/ml
Full name	Gasdermin C Antibody
Synonyms	GSDMC; MLZE; Gasdermin-C; Melanoma-derived leucine zipper-containing extranuclear factor

This product is for research use only, not for use in human, therapeutic or diagnostic procedure.

Background

GSDMC is a Protein Coding gene. Gasdermin-C mediates pyroptosis. An important paralog of this gene is GSDMD.

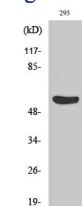
Recommended Dilution

WB: 1: 500 - 1: 2000

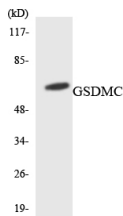
ELISA: 1: 10000

Not yet tested in other applications.

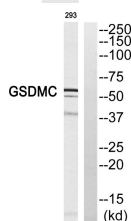
Images



Western Blot analysis of various cells using Gasdermin C Polyclonal Antibody diluted at 1:500



Western blot analysis of the lysates from HepG2 cells using GSDMC antibody.



Western blot analysis of GSDMC Antibody. The lane on the right is blocked with the GSDMC peptide.

Storage

-20°C for one year

501 Changsheng S Rd, Nanhu Dist, Jiaxing, Zhejiang, China

Tel: 86 21 31007137 | E-mail: save@bt-laboratory.com | www.bt-laboratory.com