

GASP-1 Polyclonal Antibody

Description

Product type	Primary Antibody
Code	BT-AP03477
Host	Rabbit
Isotype	IgG
Size	20ul, 50ul, 100ul
Immunogen	The antiserum was produced against synthesized peptide derived from human GASP1. AA range:741-790
Mol wt	156865
Species reactivity	Human
Clonality	Polyclonal
Recommended application	IHC-p, IF, ELISA
Concentration	1 mg/ml
Full name	GASP-1 Antibody
Synonyms	GPRASP1; GASP; KIAA0443; G-protein coupled receptor-associated sorting protein 1; GASP-1

This product is for research use only, not for use in human, therapeutic or diagnostic procedure.

Background

GPRASP1 (G protein-coupled receptor associated sorting protein 1) encodes a member of the GPRASP (G protein-coupled receptor associated sorting protein) family. The protein may modulate lysosomal sorting and functional down-regulation of a variety of G-protein coupled receptors. It targets receptors for degradation in lysosomes. The receptors interacting with this sorting protein include D2 dopamine receptor (DRD2), delta opioid receptor (OPRD1), beta-2 adrenergic receptor (ADRB2), D4 dopamine receptor (DRD4) and cannabinoid 1 receptor (CB1R). Multiple alternatively spliced transcript variants encoding the same protein have been identified.

Recommended Dilution

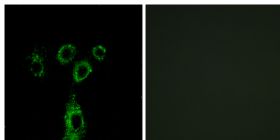
IHC: 1: 100 - 1: 300

IF: 1: 200 - 1: 1000

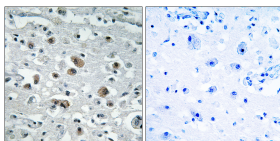
ELISA: 1: 10000

Not yet tested in other applications.

Images



Immunofluorescence analysis of A549 cells, using GASP1 Antibody. The picture on the right is blocked with the synthesized peptide.



Immunohistochemistry analysis of paraffin-embedded human brain tissue, using GASP1 Antibody. The picture on the right is blocked with the synthesized peptide.

Storage

-20°C for one year