

GATA-1 Polyclonal Antibody

Description

Product type	Primary Antibody
Code	BT-AP03480
Host	Rabbit
Isotype	IgG
Size	20ul, 50ul, 100ul
Immunogen	The antiserum was produced against synthesized peptide derived from human GATA1. AA range:277-326
Mol wt	42751
Species reactivity	Human, Mouse, Rat, Monkey
Clonality	Polyclonal
Recommended application	WB, ELISA
Concentration	1 mg/ml
Full name	GATA-1 Antibody
Synonyms	GATA1; ERYF1; GF1; Erythroid transcription factor; Eryf1; GATA-binding factor 1; GATA-1; GF-1; NF-E1 DNA-binding protein

This product is for research use only, not for use in human, therapeutic or diagnostic procedure.

Background

GATA1 encodes Erythroid transcription factor which belongs to the GATA family of transcription factors. Erythroid transcription factor plays an important role in erythroid development by regulating the switch of fetal hemoglobin to adult hemoglobin. Mutations in GATA1 have been associated with X-linked dyserythropoietic anemia and thrombocytopenia.

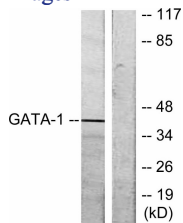
Recommended Dilution

WB: 1: 500 - 1: 2000

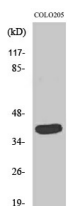
ELISA: 1: 20000

Not yet tested in other applications.

Images



Western blot analysis of lysates from COS7 cells, using GATA1 Antibody. The lane on the right is blocked with the synthesized peptide.



Western Blot analysis of various cells using GATA-1 Polyclonal Antibody diluted at 1:2000 cells nucleus.

Storage

-20°C for one year

501 Changsheng S Rd, Nanhu Dist, Jiaxing, Zhejiang, China

Tel: 86 21 31007137 | E-mail: save@bt-laboratory.com | www.bt-laboratory.com