

## GATA-1 Polyclonal Antibody

### Description

|                                |  |
|--------------------------------|--|
| <b>Product type</b>            | Primary Antibody   |
| <b>Code</b>                    | BT-AP03481   |
| <b>Host</b>                    | Rabbit   |
| <b>Isotype</b>                 | IgG  |
| <b>Size</b>                    | 20ul, 50ul, 100ul  |
| <b>Immunogen</b>               | The antiserum was produced against synthesized peptide derived from human GATA1. AA range:109-158                        |
| <b>Mol wt</b>                  | 42751  |
| <b>Species reactivity</b>      | Human, Mouse, Rat  |
| <b>Clonality</b>               | Polyclonal   |
| <b>Recommended application</b> | WB, IHC-p, IP, IF, ELISA   |
| <b>Concentration</b>           | 1 mg/ml  |
| <b>Full name</b>               | GATA-1 Antibody  |
| <b>Synonyms</b>                | GATA1; ERYF1; GF1; Erythroid transcription factor; Eryf1; GATA-binding factor 1; GATA-1; GF-1; NF-E1 DNA-binding protein |

**This product is for research use only, not for use in human, therapeutic or diagnostic procedure.**

### Background

GATA1 encodes GATA binding protein 1 which belongs to the GATA family of transcription factors. GATA binding protein 1 plays an important role in erythroid development by regulating the switch of fetal hemoglobin to adult hemoglobin. Mutations in GATA1 have been associated with X-linked dyserythropoietic anemia and thrombocytopenia.

### Recommended Dilution

WB: 1: 500 - 1: 2000

IHC: 1: 100 - 1: 300

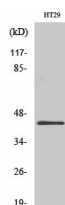
IF: 1: 200 - 1: 1000

IP: 2 - 5 ug: mg lysate

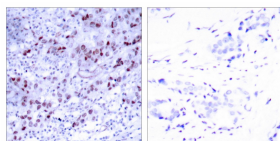
ELISA: 1: 10000

Not yet tested in other applications.

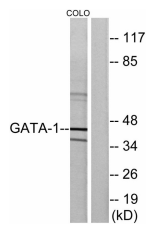
### Images



Western Blot analysis of various cells using GATA-1 Polyclonal Antibody diluted at 1:2000 cells nucleus.



Immunohistochemistry analysis of paraffin-embedded human breast carcinoma tissue, using GATA1 Antibody. The picture on the right is blocked with the synthesized peptide.



### Storage

-20°C for one year

501 Changsheng S Rd, Nanhu Dist, Jiaxing, Zhejiang, China

Tel: 86 21 31007137 | E-mail: [save@bt-laboratory.com](mailto:save@bt-laboratory.com) | [www.bt-laboratory.com](http://www.bt-laboratory.com)