

GATA-6 Polyclonal Antibody

Description

Product type	Primary Antibody
Code	BT-AP03488
Host	Rabbit
Isotype	IgG
Size	20ul, 50ul, 100ul
Immunogen	The antiserum was produced against synthesized peptide derived from human GATA6. AA range:461-510
Mol wt	45386
Species reactivity	Human, Mouse, Rat
Clonality	Polyclonal
Recommended application	WB, ELISA
Concentration	1 mg/ml
Full name	GATA-6 Antibody
Synonyms	GATA6; Transcription factor GATA-6; GATA-binding factor 6

This product is for research use only, not for use in human, therapeutic or diagnostic procedure.

Background

GATA6 is a member of a small family of zinc finger transcription factors that play an important role in the regulation of cellular differentiation and organogenesis during vertebrate development. GATA6 is expressed during early embryogenesis and localizes to endo- and mesodermally derived cells during later embryogenesis and thereby plays an important role in gut, lung, and heart development. Mutations in this gene are associated with several congenital defects.

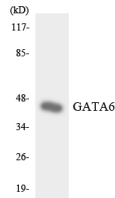
Recommended Dilution

WB: 1: 500 - 1: 2000

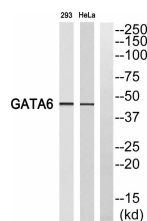
ELISA: 1: 10000

Not yet tested in other applications.

Images



Western blot analysis of the lysates from HepG2 cells using GATA6 antibody.



Western blot analysis of GATA6 Antibody. The lane on the right is blocked with the GATA6 peptide.

Storage

-20°C for one year

501 Changsheng S Rd, Nanhu Dist, Jiaxing, Zhejiang, China

Tel: 86 21 31007137 | E-mail: save@bt-laboratory.com | www.bt-laboratory.com