

GBDR1 Polyclonal Antibody

Description

Product type	Primary Antibody
Code	BT-AP03491
Host	Rabbit
Isotype	IgG
Size	20ul, 50ul, 100ul
Immunogen	The antiserum was produced against synthesized peptide derived from human UBAC1. AA range:91-140
Mol wt	45338
Species reactivity	Human
Clonality	Polyclonal
Recommended application	WB, IHC-p, ELISA
Concentration	1 mg/ml
Full name	GBDR1 Antibody
Synonyms	UBAC1; GBDR1; KPC2; UBADC1; Ubiquitin-associated domain-containing protein 1; UBA domain-containing protein 1; E3 ubiquitin-protein ligase subunit KPC2; Glioblastoma cell differentiation-related prot

This product is for research use only, not for use in human, therapeutic or diagnostic procedure.

Background

Ubiquitin-associated domain-containing protein 1 is a non-catalytic subunit of the KPC complex that acts as E3 ubiquitin-protein ligase. Required for poly-ubiquitination and proteasome-mediated degradation of CDKN1B during G1 phase of the cell cycle. Diseases associated with UBAC1 include acute cystitis and bladder disease. Among its related pathways are Immune System and Antigen processing- Ubiquitination and Proteasome degradation.

Recommended Dilution

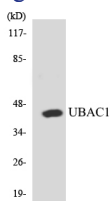
WB: 1: 500 - 1: 2000

IHC: 1: 100 - 1: 300

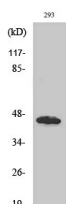
ELISA: 1: 10000

Not yet tested in other applications.

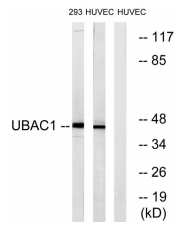
Images



Western blot analysis of the lysates from HT-29 cells using UBAC1 antibody.



Western Blot analysis of various cells using GBDR1 Polyclonal Antibody diluted at 1:500



Storage

-20°C for one year

501 Changsheng S Rd, Nanhu Dist, Jiaxing, Zhejiang, China

Tel: 86 21 31007137 | E-mail: save@bt-laboratory.com | www.bt-laboratory.com