

GCG Polyclonal Antibody

Description

Product type	Primary Antibody
Code	BT-AP03503
Host	Rabbit
Isotype	IgG
Size	20ul, 50ul, 100ul
Immunogen	The antiserum was produced against synthesized peptide derived from human Glucagon. AA range:61-110
Mol wt	20909
Species reactivity	Human, Mouse, Rat, Monkey
Clonality	Polyclonal
Recommended application	WB, IHC-p, IF, ELISA
Concentration	1 mg/ml
Full name	GCG Antibody
Synonyms	GCG; Glucagon

This product is for research use only, not for use in human, therapeutic or diagnostic procedure.

Background

Glucagon encoded by GCG is actually a preproprotein that is cleaved into four distinct mature peptides. One of these, glucagon, is a pancreatic hormone that counteracts the glucose-lowering action of insulin by stimulating glycogenolysis and gluconeogenesis. Glucagon is a ligand for a specific G-protein linked receptor whose signalling pathway controls cell proliferation. Two of the other peptides are secreted from gut endocrine cells and promote nutrient absorption through distinct mechanisms. Finally, the fourth peptide is similar to glicentin, an active enteroglucagon.

Recommended Dilution

WB: 1: 500 - 1: 2000

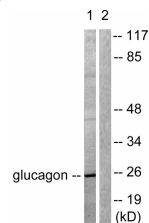
IHC: 1: 100 - 1: 300

IF: 1: 200 - 1: 1000

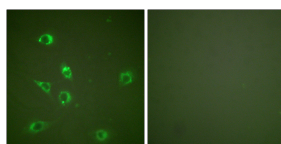
ELISA: 1: 40000

Not yet tested in other applications.

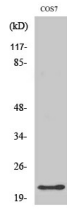
Images



Western blot analysis of lysates from COS7 cells, using Glucagon Antibody. The lane on the right is blocked with the synthesized peptide.



Immunofluorescence analysis of NIH/3T3 cells, using Glucagon Antibody. The picture on the right is blocked with the synthesized peptide.



Western Blot analysis of various cells using GCG Polyclonal Antibody

Storage

-20°C for one year

501 Changsheng S Rd, Nanhu Dist, Jiaxing, Zhejiang, China

Tel: 86 21 31007137 | E-mail: save@bt-laboratory.com | www.bt-laboratory.com