

GCKR Polyclonal Antibody

Description

Product type	Primary Antibody
Code	BT-AP03507
Host	Rabbit
Isotype	IgG
Size	20ul, 50ul, 100ul
Immunogen	The antiserum was produced against synthesized peptide derived from human Glucokinase Regulator. AA range:211-260
Mol wt	68685
Species reactivity	Human, Mouse, Rat
Clonality	Polyclonal
Recommended application	WB, ELISA
Concentration	1 mg/ml
Full name	GCKR Antibody
Synonyms	GCKR; Glucokinase regulatory protein; Glucokinase regulator

This product is for research use only, not for use in human, therapeutic or diagnostic procedure.

Background

GCKR encodes glucokinase regulator belonging to the GCKR subfamily of the SIS (Sugar ISomerase) family of proteins. The gene product is a regulatory protein that inhibits glucokinase in liver and pancreatic islet cells by binding non-covalently to form an inactive complex with the enzyme. GCKR is considered a susceptibility gene candidate for a form of maturity-onset diabetes of the young (MODY).

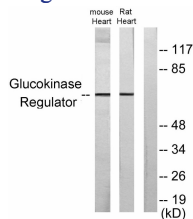
Recommended Dilution

WB: 1: 500 - 1: 2000

ELISA: 1: 40000

Not yet tested in other applications.

Images



Western blot analysis of lysates from mouse heart and rat heart cells, using Glucokinase Regulator Antibody. The lane on the right is blocked with the synthesized peptide.

Storage

-20°C for one year