

GCP3 Polyclonal Antibody

Description

Product type	Primary Antibody
Code	BT-AP03516
Host	Rabbit
Isotype	IgG
Size	20ul, 50ul, 100ul
Immunogen	The antiserum was produced against synthesized peptide derived from human TUBGCP3. AA range:201-250
Mol wt	103571
Species reactivity	Human, Mouse
Clonality	Polyclonal
Recommended application	WB, IHC-p, ELISA
Concentration	1 mg/ml
Full name	GCP3 Antibody
Synonyms	TUBGCP3; GCP3; Gamma-tubulin complex component 3; GCP-3; hGCP3; Gamma-ring complex protein 104 kDa; h104p; hGrip104; Spindle pole body protein Spc98 homolog; hSpc98

This product is for research use only, not for use in human, therapeutic or diagnostic procedure.

Background

Gamma-tubulin complex component 3 is a protein that in humans is encoded by the TUBGCP3 gene. It is part of the gamma tubulin complex, which required for microtubule nucleation at the centrosome. Gamma-tubulin complex is necessary for microtubule nucleation at the centrosome. Among its related pathways are Cell Cycle, Mitotic and Regulation of PLK1 Activity at G2/M Transition. Gene Ontology (GO) annotations related to this gene include structural molecule activity and gamma-tubulin binding. An important paralog of this gene is TUBGCP2.

Recommended Dilution

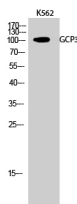
WB: 1: 500 - 1: 2000

IHC: 1: 100 - 1: 300

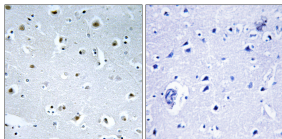
ELISA: 1: 20000

Not yet tested in other applications.

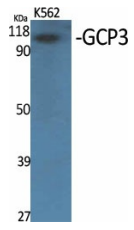
Images



Western Blot analysis of K562 cells using GCP3 Polyclonal Antibody



Immunohistochemistry analysis of paraffin-embedded human brain tissue, using TUBGCP3 Antibody. The picture on the right is blocked with the synthesized peptide.



Western Blot analysis of various cells using GCP3 Polyclonal Antibody

Storage

-20°C for one year

501 Changsheng S Rd, Nanhu Dist, Jiaxing, Zhejiang, China

Tel: 86 21 31007137 | E-mail: save@bt-laboratory.com | www.bt-laboratory.com