

GCP4 Polyclonal Antibody

Description

Product type	Primary Antibody
Code	BT-AP03517
Host	Rabbit
Isotype	IgG
Size	20ul, 50ul, 100ul
Immunogen	The antiserum was produced against synthesized peptide derived from human TUBGCP4. AA range:191-240
Mol wt	76089
Species reactivity	Human, Mouse
Clonality	Polyclonal
Recommended application	WB, IHC-p, ELISA
Concentration	1 mg/ml
Full name	GCP4 Antibody
Synonyms	TUBGCP4; 76P; GCP4; Gamma-tubulin complex component 4; GCP-4; hGCP4; Gamma-ring complex protein 76 kDa; h76p; hGrip76

This product is for research use only, not for use in human, therapeutic or diagnostic procedure.

Background

TUBGCP4 encodes a component of the gamma-tubulin ring complex, gamma-tubulin complex component 4, which is required for microtubule nucleation. In mammalian cells, the protein localizes to centrosomes in association with gamma-tubulin. Crystal structure analysis revealed a structure composed of five helical bundles arranged around conserved hydrophobic cores. An exposed surface area located in the C-terminal domain is essential and sufficient for direct binding to gamma-tubulin. Mutations in this gene that alter microtubule organization are associated with microcephaly and chorioretinopathy. Alternative splicing results in multiple transcript variants.

Recommended Dilution

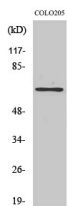
WB: 1: 500 - 1: 2000

IHC: 1: 100 - 1: 300

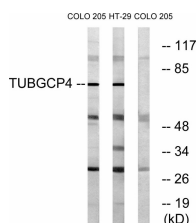
ELISA: 1: 10000

Not yet tested in other applications.

Images



Western Blot analysis of various cells using GCP4 Polyclonal Antibody



Western blot analysis of lysates from COLO and HT-29 cells, using TUBGCP4 Antibody. The lane on the right is blocked with the synthesized peptide.

Storage

-20°C for one year

501 Changsheng S Rd, Nanhu Dist, Jiaxing, Zhejiang, China

Tel: 86 21 31007137 | E-mail: save@bt-laboratory.com | www.bt-laboratory.com