

GCSc-Gamma Polyclonal Antibody

Description

Product type	Primary Antibody
Code	BT-AP03520
Host	Rabbit
Isotype	IgG
Size	20ul, 50ul, 100ul
Immunogen	The antiserum was produced against synthesized peptide derived from human GCSc-gamma. AA range:266-315
Mol wt	72766
Species reactivity	Human, Mouse, Rat
Clonality	Polyclonal
Recommended application	WB, ELISA
Concentration	1 mg/ml
Full name	GCSc-gamma Antibody
Synonyms	GCLC; GLCL; GLCLC; Glutamate--cysteine ligase catalytic subunit; GCS heavy chain; Gamma-ECS; Gamma-glutamylcysteine synthetase

This product is for research use only, not for use in human, therapeutic or diagnostic procedure.

Background

Glutamate-cysteine ligase, also known as gamma-glutamylcysteine synthetase is the first rate-limiting enzyme of glutathione synthesis. The enzyme consists of two subunits, a heavy catalytic subunit and a light regulatory subunit. GCLC encodes Glutamate--cysteine ligase catalytic subunit, while the regulatory subunit is derived from a different gene located on chromosome 1p22-p21. Mutations at GCLC have been associated with hemolytic anemia due to deficiency of gamma-glutamylcysteine synthetase and susceptibility to myocardial infarction.

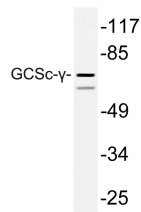
Recommended Dilution

WB: 1: 500 - 1: 2000

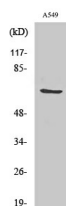
ELISA: 1: 10000

Not yet tested in other applications.

Images



Western blot analysis of lysate from A549 cells, using GCSc- γ antibody.



Western Blot analysis of various cells using GCSc- γ Polyclonal Antibody

Storage

-20°C for one year

501 Changsheng S Rd, Nanhu Dist, Jiaxing, Zhejiang, China

Tel: 86 21 31007137 | E-mail: save@bt-laboratory.com | www.bt-laboratory.com