

GCSm-Gamma Polyclonal Antibody

Description

Product type	Primary Antibody
Code	BT-AP03523
Host	Rabbit
Isotype	IgG
Size	20ul, 50ul, 100ul
Immunogen	The antiserum was produced against synthesized peptide derived from human GCSm-gamma. AA range:42-91
Mol wt	30727
Species reactivity	Human, Mouse, Rat, Monkey
Clonality	Polyclonal
Recommended application	WB, IHC-p, ELISA
Concentration	1 mg/ml
Full name	GCSm-gamma Antibody
Synonyms	GCLM; GLCLR; Glutamate--cysteine ligase regulatory subunit; GCS light chain; Gamma-ECS regulatory subunit; Gamma-glutamylcysteine synthetase regulatory subunit; Glutamate--cysteine ligase modifier sub

This product is for research use only, not for use in human, therapeutic or diagnostic procedure.

Background

Glutamate-cysteine ligase, also known as gamma-glutamylcysteine synthetase, is the first rate limiting enzyme of glutathione synthesis. The enzyme consists of two subunits, a heavy catalytic subunit and a light regulatory subunit. Gamma glutamylcysteine synthetase deficiency has been implicated in some forms of hemolytic anemia. Alternative splicing results in multiple transcript variants encoding different isoforms.

Recommended Dilution

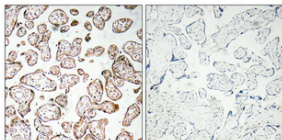
WB: 1: 500 - 1: 2000

IHC: 1: 100 - 1: 300

ELISA: 1: 10000

Not yet tested in other applications.

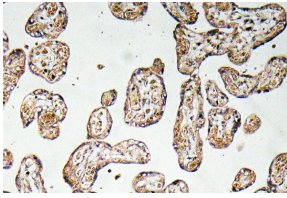
Images



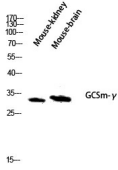
Immunohistochemical analysis of paraffin-embedded Human placenta. Antibody was diluted at 1:100(4° overnight). High-pressure and temperature Tris-EDTA,pH8.0 was used for antigen retrieval. Negative contrl (right) obtained from antibody was pre-absorbed by immunogen peptide.



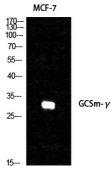
Western Blot analysis of COS7 cells using GCSm- γ Polyclonal Antibody diluted at 1:1000



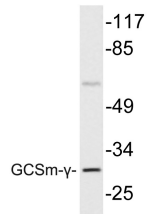
Immunohistochemistry analysis of GCSm- γ antibody in paraffin-embedded human prostate carcinoma tissue.



Western blot analysis of Mouse-kidney mouse-brain lysis using GCSm- γ antibody. Antibody was diluted at 1:1000



Western Blot analysis of various cells using GCSm- γ Polyclonal Antibody diluted at 1:1000



Western blot analysis of lysate from COS7 cells, using GCSm- γ antibody.

Storage

-20°C for one year

501 Changsheng S Rd, Nanhu Dist, Jiaxing, Zhejiang, China

Tel: 86 21 31007137 | E-mail: save@bt-laboratory.com | www.bt-laboratory.com