

GCS- Alpha-1 Polyclonal Antibody

Description

Product type	Primary Antibody
Code	BT-AP03524
Host	Rabbit
Isotype	IgG
Size	20ul, 50ul, 100ul
Immunogen	The antiserum was produced against synthesized peptide derived from human GCS-alpha-1. AA range:374-423
Mol wt	77452
Species reactivity	Human, Mouse, Rat
Clonality	Polyclonal
Recommended application	WB, IHC-p, ELISA
Concentration	1 mg/ml
Full name	GCS-alpha-1 Antibody
Synonyms	GUCY1A3; GUC1A3; GUCSA3; GUCY1A1; Guanylate cyclase soluble subunit alpha-3; GCS-alpha-3; GCS-alpha-1; Soluble guanylate cyclase large subunit

This product is for research use only, not for use in human, therapeutic or diagnostic procedure.

Background

Soluble guanylate cyclases are heterodimeric proteins that catalyze the conversion of GTP to 3',5'-cyclic GMP and pyrophosphate. Guanylate cyclase soluble subunit alpha-3 encoded by GUCY1A3 is an alpha subunit of this complex and it interacts with a beta subunit to form the guanylate cyclase enzyme, which is activated by nitric oxide. Several transcript variants encoding a few different isoforms have been found for this gene.

Recommended Dilution

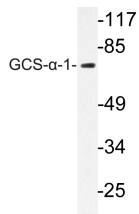
WB: 1: 500 - 1: 2000

IHC: 1: 100 - 1: 300

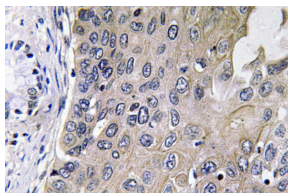
ELISA: 1: 40000

Not yet tested in other applications.

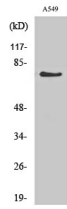
Images



Western blot analysis of lysate from A549 cells, using GCS- α -1 antibody.



Immunohistochemistry analysis of GCS- α -1 antibody in paraffin-embedded human lung carcinoma tissue.



Western Blot analysis of various cells using GCS- α -1 Polyclonal Antibody

Storage

-20°C for one year

501 Changsheng S Rd, Nanhu Dist, Jiaxing, Zhejiang, China

Tel: 86 21 31007137 | E-mail: save@bt-laboratory.com | www.bt-laboratory.com