

GCS-Beta-1 Polyclonal Antibody

Description

Product type	Primary Antibody
Code	BT-AP03525
Host	Rabbit
Isotype	IgG
Size	20ul, 50ul, 100ul
Immunogen	The antiserum was produced against synthesized peptide derived from human Guanylate Cyclase beta. AA range:10-59
Mol wt	70514
Species reactivity	Human, Mouse, Rat
Clonality	Polyclonal
Recommended application	WB, IHC-p, ELISA
Concentration	1 mg/ml
Full name	GCS-beta-1 Antibody
Synonyms	GUCY1B3; GUC1B3; GUCSB3; GUCY1B1; Guanylate cyclase soluble subunit beta-1; GCS-beta-1; Guanylate cyclase soluble subunit beta-3; GCS-beta-3; Soluble guanylate cyclase small subunit

This product is for research use only, not for use in human, therapeutic or diagnostic procedure.

Background

GUCY1B3 encodes the beta subunit of the soluble guanylate cyclase (sGC), which catalyzes the conversion of GTP (guanosine triphosphate) to cGMP (cyclic guanosine monophosphate). Guanylate cyclase soluble subunit beta-1 contains an HNOX domain, which serves as a receptor for ligands such as nitric oxide, oxygen and nitrovasodilator drugs. Alternative splicing results in multiple transcript variants.

Recommended Dilution

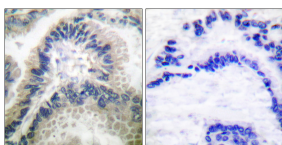
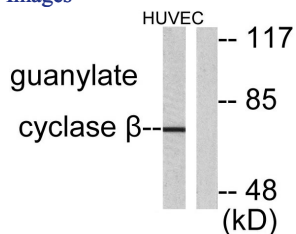
WB: 1: 500 - 1: 2000

IHC: 1: 100 - 1: 300

ELISA: 1: 5000

Not yet tested in other applications.

Images





Western Blot analysis of various cells using GCS- β -1 Polyclonal Antibody

Storage

-20°C for one year

501 Changsheng S Rd, Nanhu Dist, Jiaxing, Zhejiang, China

Tel: 86 21 31007137 | E-mail: save@bt-laboratory.com | www.bt-laboratory.com