

GCS-Beta-2 Polyclonal Antibody

Description

| | |
|--------------------------------|---|
| Product type | Primary Antibody |
| Code | BT-AP03526 |
| Host | Rabbit |
| Isotype | IgG |
| Size | 20ul, 50ul, 100ul |
| Immunogen | The antiserum was produced against synthesized peptide derived from human GCS-beta-2. AA range:53-102 |
| Mol wt | 70368 |
| Species reactivity | Human, Mouse, Rat |
| Clonality | Polyclonal |
| Recommended application | IHC-p, ELISA |
| Concentration | 1 mg/ml |
| Full name | GCS-beta-2 Antibody |
| Synonyms | GUCY1B2; Guanylate cyclase soluble subunit beta-2; GCS-beta-2 |

This product is for research use only, not for use in human, therapeutic or diagnostic procedure.

Background

Nitric oxide-sensitive guanylyl cyclase is a heterodimeric enzyme consisting of an alpha and a beta subunit. The enzyme converts GTP into the second messenger cGMP and plays a major role in the cardiovascular system as a receptor for nitric oxide. Unlike other guanylyl cyclases, GUCY1B2 contains an 86-amino acid C-terminal extension with a consensus sequence for isoprenylation/carboxymethylation.

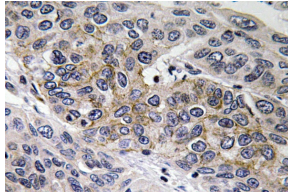
Recommended Dilution

IHC: 1: 100 - 1: 300

ELISA: 1: 10000

Not yet tested in other applications.

Images



Immunohistochemistry analysis of GCS- β -2 antibody in paraffin-embedded human lung carcinoma tissue.

Storage

-20°C for one year