

GDF-15 Polyclonal Antibody

Description

Product type	Primary Antibody
Code	BT-AP03528
Host	Rabbit
Isotype	IgG
Size	20ul, 50ul, 100ul
Immunogen	The antiserum was produced against synthesized peptide derived from human GDF15. AA range:31-80
Mol wt	34168
Species reactivity	Human
Clonality	Polyclonal
Recommended application	WB, ELISA
Concentration	1 mg/ml
Full name	GDF-15 Antibody
Synonyms	GDF15; MIC1; PDF; PLAB; PTGFB; Growth/differentiation factor 15; GDF-15; Macrophage inhibitory cytokine 1; MIC-1; NSAID-activated gene 1 protein; NAG-1; NSAID-regulated gene 1 protein; NRG-1; Placenta

This product is for research use only, not for use in human, therapeutic or diagnostic procedure.

Background

Growth/differentiation factor 15 encoded by GDF15 belongs to the transforming growth factor-beta (TGF-beta) family. The protein is expressed in a broad range of cell types, acts as a pleiotropic cytokine and is involved in the stress response program of cells after cellular injury. Increased protein levels are associated with disease states such as tissue hypoxia, inflammation, acute injury and oxidative stress.

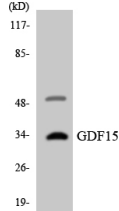
Recommended Dilution

WB: 1: 500 - 1: 2000

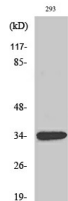
ELISA: 1: 40000

Not yet tested in other applications.

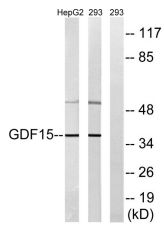
Images



Western blot analysis of the lysates from HT-29 cells using GDF15 antibody.



Western Blot analysis of various cells using GDF-15 Polyclonal Antibody diluted at 1:1000



Western blot analysis of lysates from 293 and HepG2 cells, using GDF15 Antibody. The lane on the right is blocked with the synthesized peptide.

Storage

-20°C for one year

501 Changsheng S Rd, Nanhu Dist, Jiaxing, Zhejiang, China

Tel: 86 21 31007137 | E-mail: save@bt-laboratory.com | www.bt-laboratory.com