

GDF-8 Polyclonal Antibody

Description

Product type	Primary Antibody
Code	BT-AP03535
Host	Rabbit
Isotype	IgG
Size	20ul, 50ul, 100ul
Immunogen	The antiserum was produced against synthesized peptide derived from human GDF-8. AA range:38-87
Mol wt	42750
Species reactivity	Human, Mouse
Clonality	Polyclonal
Recommended application	IHC-p, ELISA
Concentration	1 mg/ml
Full name	GDF-8 Antibody
Synonyms	MSTN; GDF8; Growth/differentiation factor 8; GDF-8; Myostatin

This product is for research use only, not for use in human, therapeutic or diagnostic procedure.

Background

MSTN encodes a secreted ligand of the TGF-beta (transforming growth factor-beta) superfamily of proteins. Ligands of this family bind various TGF-beta receptors leading to recruitment and activation of SMAD family transcription factors that regulate gene expression. The encoded preproprotein is proteolytically processed to generate each subunit of the disulfide-linked homodimer. This protein negatively regulates skeletal muscle cell proliferation and differentiation. Mutations in this gene are associated with increased skeletal muscle mass in humans and other mammals.

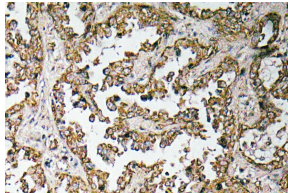
Recommended Dilution

IHC: 1: 100 - 1: 300

ELISA: 1: 10000

Not yet tested in other applications.

Images



Immunohistochemistry analysis of GDF-8 antibody in paraffin-embedded human lung carcinoma tissue.

Storage

-20°C for one year