

GDF-9 Polyclonal Antibody

Description

Product type	Primary Antibody
Code	BT-AP03536
Host	Rabbit
Isotype	IgG
Size	20ul, 50ul, 100ul
Immunogen	The antiserum was produced against synthesized peptide derived from the C-terminal region of human GDF9. AA range:405-454
Mol wt	51444
Species reactivity	Human, Mouse, Rat
Clonality	Polyclonal
Recommended application	WB, ELISA
Concentration	1 mg/ml
Full name	GDF-9 Antibody
Synonyms	GDF9; Growth/differentiation factor 9; GDF-9

This product is for research use only, not for use in human, therapeutic or diagnostic procedure.

Background

GDF9 encodes a secreted ligand of the TGF-beta (transforming growth factor-beta) superfamily of proteins. Ligands of this family bind various TGF-beta receptors leading to recruitment and activation of SMAD family transcription factors that regulate gene expression. The encoded preproprotein is proteolytically processed to generate each subunit of the disulfide-linked homodimer. Growth/differentiation factor 9 regulates ovarian function. Reduced expression of GDF9 may be associated with polycystic ovary syndrome and mutations in this gene may be more common in mothers of dizygotic twins.

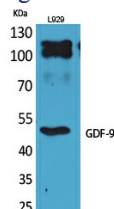
Recommended Dilution

WB: 1: 500 - 1: 2000

ELISA: 1: 20000

Not yet tested in other applications.

Images



Western Blot analysis of L929 cells using GDF-9 Polyclonal Antibody. Antibody was diluted at 1:1000. Secondary antibody was diluted at 1:20000

Storage

-20°C for one year