

GDI-1 Polyclonal Antibody

Description

Product type	Primary Antibody
Code	BT-AP03538
Host	Rabbit
Isotype	IgG
Size	20ul, 50ul, 100ul
Immunogen	The antiserum was produced against synthesized peptide derived from human GDI-1. AA range:394-443
Mol wt	50583
Species reactivity	Human, Mouse, Rat
Clonality	Polyclonal
Recommended application	WB, ELISA
Concentration	1 mg/ml
Full name	GDI-1 Antibody
Synonyms	GDI1; GDIL; OPHN2; RABGDIA; XAP4; Rab GDP dissociation inhibitor alpha; Rab GDI alpha; Guanosine diphosphate dissociation inhibitor 1; GDI-1; Oligophrenin-2; Protein XAP-4

This product is for research use only, not for use in human, therapeutic or diagnostic procedure.

Background

GDP dissociation inhibitors are proteins that regulate the GDP-GTP exchange reaction of members of the rab family, small GTP-binding proteins of the ras superfamily, that are involved in vesicular trafficking of molecules between cellular organelles. GDIs slow the rate of dissociation of GDP from rab proteins and release GDP from membrane-bound rabs. GDI1 is expressed primarily in neural and sensory tissues. Mutations in GDI1 have been linked to X-linked nonspecific mental retardation.

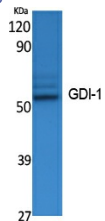
Recommended Dilution

WB: 1: 500 - 1: 2000

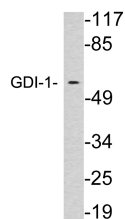
ELISA: 1: 20000

Not yet tested in other applications.

Images



Western Blot analysis of extracts from K562 cells, using GDI-1 Polyclonal Antibody. Secondary antibody was diluted at 1:20000



Western blot analysis of lysates from brain tissue, using GDI-1 antibody.

Storage

-20°C for one year

501 Changsheng S Rd, Nanhu Dist, Jiaxing, Zhejiang, China

Tel: 86 21 31007137 | E-mail: save@bt-laboratory.com | www.bt-laboratory.com