

Gemin3 Polyclonal Antibody

Description

Product type	Primary Antibody
Code	BT-AP03547
Host	Rabbit
Isotype	IgG
Size	20ul, 50ul, 100ul
Immunogen	The antiserum was produced against synthesized peptide derived from human DDX20. AA range:273-322
Mol wt	92241
Species reactivity	Human, Mouse
Clonality	Polyclonal
Recommended application	WB, ELISA
Concentration	1 mg/ml
Full name	Gemin3 Antibody
Synonyms	DDX20; DP103; GEMIN3; Probable ATP-dependent RNA helicase DDX20; Component of gem 3; DEAD box protein 20; DEAD box protein DP 103; Gemin-3

This product is for research use only, not for use in human, therapeutic or diagnostic procedure.

Background

DEAD box proteins, characterized by the conserved motif Asp-Glu-Ala-Asp (DEAD), are putative RNA helicases. They are implicated in a number of cellular processes involving alteration of RNA secondary structure such as translation initiation, nuclear and mitochondrial splicing, and ribosome and spliceosome assembly. Based on their distribution patterns, some members of this family are believed to be involved in embryogenesis, spermatogenesis, and cellular growth and division. DDX20 encodes a DEAD box protein, which has an ATPase activity and is a component of the survival of motor neurons (SMN) complex. This protein interacts directly with SMN, the spinal muscular atrophy gene product, and may play a catalytic role in the function of the SMN complex on RNPs.

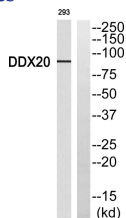
Recommended Dilution

WB: 1: 500 - 1: 2000

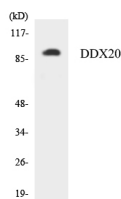
ELISA: 1: 40000

Not yet tested in other applications.

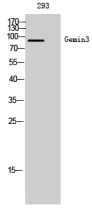
Images



Western blot analysis of DDX20 Antibody. The lane on the right is blocked with the DDX20 peptide.



Western blot analysis of the lysates from K562 cells using DDX20 antibody.



Western Blot analysis of 293 cells using Gemin3 Polyclonal Antibody

Storage

-20°C for one year

501 Changsheng S Rd, Nanhu Dist, Jiaxing, Zhejiang, China

Tel: 86 21 31007137 | E-mail: save@bt-laboratory.com | www.bt-laboratory.com