

## MBD2 Rabbit Polyclonal Antibody

### Description

Product type	Primary Antibody
Code	BT-AP03548
Host	Rabbit
Isotype	IgG
Size	100ul, 50ul, 20ul
Immunogen	Synthesized peptide derived from human MBD2
Mol wt	45210
Species reactivity	Human, Mouse
Clonality	Polyclonal
Recommended application	WB
Concentration	1 mg/ml
Full name	MBD2
Synonyms	MBD2

This product is for research use only, not for use in human, therapeutic or diagnostic procedure.

### Background

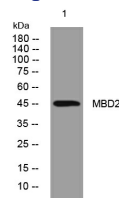
DNA methylation is the major modification of eukaryotic genomes and plays an essential role in mammalian development. Human proteins MECP2| MBD1| MBD2| MBD3| and MBD4 comprise a family of nuclear proteins related by the presence in each of a methyl-CpG binding domain (MBD). Each of these proteins| with the exception of MBD3| is capable of binding specifically to methylated DNA. MECP2| MBD1 and MBD2 can also repress transcription from methylated gene promoters. The protein encoded by this gene may function as a mediator of the biological consequences of the methylation signal. It is also reported that the this protein functions as a demethylase to activate transcription| as DNA methylation causes gene silencing. Two transcript variants encoding different isoforms have been found for this gene.

### Recommended Dilution

WB: 1: 500 - 1: 2000

Not yet tested in other applications.

### Images



Western blot analysis of lysates from SH-SY5Y cells, primary antibody was diluted at 1:1000, 4°C overnight

### Storage

-20°C for 1 year