

GFRP Polyclonal Antibody

Description

Product type	Primary Antibody
Code	BT-AP03552
Host	Rabbit
Isotype	IgG
Size	20ul, 50ul, 100ul
Immunogen	The antiserum was produced against synthesized peptide derived from human GCHFR. AA range:31-80
Mol wt	9698
Species reactivity	Human, Rat
Clonality	Polyclonal
Recommended application	IHC-p, ELISA
Concentration	1 mg/ml
Full name	GFRP Antibody
Synonyms	GCHFR; GFRP; GTP cyclohydrolase 1 feedback regulatory protein; GFRP; GTP cyclohydrolase I feedback regulatory protein; p35

This product is for research use only, not for use in human, therapeutic or diagnostic procedure.

Background

GTP cyclohydrolase I feedback regulatory protein binds to and mediates tetrahydrobiopterin inhibition of GTP cyclohydrolase I. The regulatory protein, GCHFR, consists of a homodimer. It is postulated that GCHFR may play a role in regulating phenylalanine metabolism in the liver and in the production of biogenic amine neurotransmitters and nitric oxide.

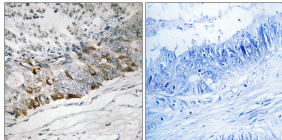
Recommended Dilution

IHC: 1: 100 - 1: 300

ELISA: 1: 10000

Not yet tested in other applications.

Images



Immunohistochemistry analysis of paraffin-embedded human colon carcinoma tissue, using GCHFR Antibody. The picture on the right is blocked with the synthesized peptide.

Storage

-20°C for one year