

## GHITM Polyclonal Antibody

### Description

<b>Product type</b>	Primary Antibody
<b>Code</b>	BT-AP03559
<b>Host</b>	Rabbit
<b>Isotype</b>	IgG
<b>Size</b>	20ul, 50ul, 100ul
<b>Immunogen</b>	The antiserum was produced against synthesized peptide derived from human GHITM. AA range:31-80
<b>Mol wt</b>	37205
<b>Species reactivity</b>	Human
<b>Clonality</b>	Polyclonal
<b>Recommended application</b>	WB, IHC-p, ELISA
<b>Concentration</b>	1 mg/ml
<b>Full name</b>	GHITM Antibody
<b>Synonyms</b>	GHITM; DERP2; MICS1; TMBIM5; My021; Growth hormone-inducible transmembrane protein; Dermal papilla-derived protein 2; Mitochondrial morphology and cristae structure 1; MICS1; Transmembrane BAX inhibit

This product is for research use only, not for use in human, therapeutic or diagnostic procedure.

### Background

Required for the mitochondrial tubular network and cristae organization. Involved in apoptotic release of cytochrome c.

### Recommended Dilution

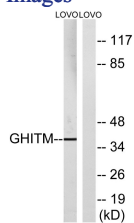
WB: 1: 500 - 1: 2000

IHC: 1: 100 - 1: 300

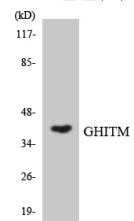
ELISA: 1: 10000

Not yet tested in other applications.

### Images



Western blot analysis of lysates from LOVO cells, using GHITM Antibody. The lane on the right is blocked with the synthesized peptide.



Western blot analysis of the lysates from HepG2 cells using GHITM antibody.

## Storage

-20°C for one year

501 Changsheng S Rd, Nanhu Dist, Jiaxing, Zhejiang, China

Tel: 86 21 31007137 | E-mail: [save@bt-laboratory.com](mailto:save@bt-laboratory.com) | [www.bt-laboratory.com](http://www.bt-laboratory.com)