

Ghrelin Polyclonal Antibody

Description

Product type	Primary Antibody
Code	BT-AP03561
Host	Rabbit
Isotype	IgG
Size	20ul, 50ul, 100ul
Immunogen	The antiserum was produced against synthesized peptide derived from human Ghrelin. AA range:47-96
Mol wt	12911
Species reactivity	Human, Mouse, Rat
Clonality	Polyclonal
Recommended application	WB, IHC-p, ELISA
Concentration	1 mg/ml
Full name	Ghrelin Antibody
Synonyms	GHRL; MTLRP; Appetite-regulating hormone; Growth hormone secretagogue; Growth hormone-releasing peptide; Motilin-related peptide; Protein M46

This product is for research use only, not for use in human, therapeutic or diagnostic procedure.

Background

GHRL encodes the ghrelin-obestatin preproprotein, appetite-regulating hormone, that is cleaved to yield two peptides, ghrelin and obestatin. Ghrelin is a powerful appetite stimulant and plays an important role in energy homeostasis. Its secretion is initiated when the stomach is empty, whereupon it binds to the growth hormone secretagogue receptor in the hypothalamus which results in the secretion of growth hormone (somatotropin). Ghrelin is thought to regulate multiple activities, including hunger, reward perception via the mesolimbic pathway, gastric acid secretion, gastrointestinal motility, and pancreatic glucose-stimulated insulin secretion. It was initially proposed that obestatin plays an opposing role to ghrelin by promoting satiety and thus decreasing food intake, but this action is still debated. Recent reports suggest multiple metabolic roles for obestatin, including regulating adipocyte function and glucose metabolism. Alternative splicing results in multiple transcript variants. In addition, antisense transcripts for GHRL have been identified and may potentially regulate ghrelin-obestatin preproprotein expression.

Recommended Dilution

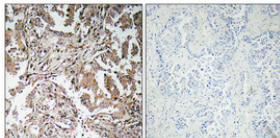
WB: 1: 500 - 1: 2000

IHC: 1: 100 - 1: 300

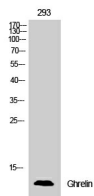
ELISA: 1: 10000

Not yet tested in other applications.

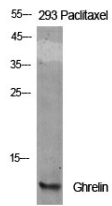
Images



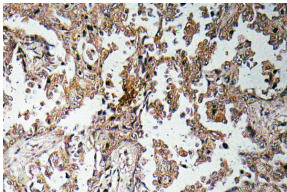
Immunohistochemical analysis of paraffin-embedded Human lung cancer. Antibody was diluted at 1:100(4° overnight). High-pressure and temperature Tris-EDTA,pH8.0 was used for antigen retrieval. Negative contrl (right) obtained from antibody was pre-absorbed by immunogen peptide.



Western Blot analysis of 293 cells using Ghrelin Polyclonal Antibody



Western Blot analysis of various cells using Ghrelin Polyclonal Antibody



Immunohistochemistry analysis of Ghrelin antibody in paraffin-embedded human lung carcinoma tissue.



Western blot analysis of lysate from 293 cells, using Ghrelin antibody.

Storage

-20°C for one year

501 Changsheng S Rd, Nanhu Dist, Jiaxing, Zhejiang, China

Tel: 86 21 31007137 | E-mail: save@bt-laboratory.com | www.bt-laboratory.com