

GHRH-R Polyclonal Antibody

Description

Product type	Primary Antibody
Code	BT-AP03563
Host	Rabbit
Isotype	IgG
Size	20ul, 50ul, 100ul
Immunogen	The antiserum was produced against synthesized peptide derived from human GHRHR. AA range:351-400
Mol wt	47402
Species reactivity	Human, Mouse, Rat
Clonality	Polyclonal
Recommended application	WB, IF, ELISA
Concentration	1 mg/ml
Full name	GHRH-R Antibody
Synonyms	GHRHR; Growth hormone-releasing hormone receptor; GHRH receptor; Growth hormone-releasing factor receptor; GRF receptor; GRFR

This product is for research use only, not for use in human, therapeutic or diagnostic procedure.

Background

GHRHR encodes a receptor for growth hormone-releasing hormone. Binding of this hormone to the receptor leads to synthesis and release of growth hormone. Mutations in this gene have been associated with isolated growth hormone deficiency (IGHD), also known as Dwarfism of Sindh, a disorder characterized by short stature.

Recommended Dilution

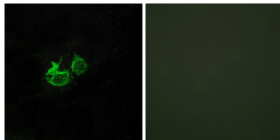
WB: 1: 500 - 1: 2000

IF: 1: 200 - 1: 1000

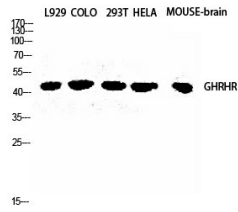
ELISA: 1: 20000

Not yet tested in other applications.

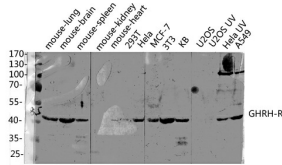
Images



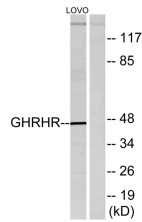
Immunofluorescence analysis of HUVEC cells, using GHRHR Antibody. The picture on the right is blocked with the synthesized peptide.



Western Blot analysis of L929 COLO 293T HELA MOUSE-brain cells using GHRH-R Polyclonal Antibody diluted at 1:2000



Western blot analysis of various lysis using GHRH-R Polyclonal Antibody diluted at 1:2000. Secondary antibody was diluted at 1:20000



Western blot analysis of lysates from LOVO cells, using GHRHR Antibody. The lane on the right is blocked with the synthesized peptide.

Storage

-20°C for one year

501 Changsheng S Rd, Nanhu Dist, Jiaxing, Zhejiang, China

Tel: 86 21 31007137 | E-mail: save@bt-laboratory.com | www.bt-laboratory.com