

GIDRP88 Polyclonal Antibody

Description

Product type	Primary Antibody
Code	BT-AP03564
Host	Rabbit
Isotype	IgG
Size	20ul, 50ul, 100ul
Immunogen	The antiserum was produced against synthesized peptide derived from human GIDRP88. AA range:721-770
Mol wt	87884
Species reactivity	Human, Mouse, Monkey
Clonality	Polyclonal
Recommended application	WB, IHC-p, ELISA
Concentration	1 mg/ml
Full name	GIDRP88 Antibody
Synonyms	R3HCC1L; C10orf28; GIDRP88; R3H and coiled-coil domain-containing protein 1-like; Growth inhibition and differentiation-related protein 88; Putative mitochondrial space protein 32.1

This product is for research use only, not for use in human, therapeutic or diagnostic procedure.

Background

R3HCC1L (R3H Domain And Coiled-Coil Containing 1 Like) is a Protein Coding gene. Diseases associated with R3HCC1L include cutaneous anthrax. GO annotations related to this gene include nucleotide binding. An important paralog of this gene is R3HCC1.

Recommended Dilution

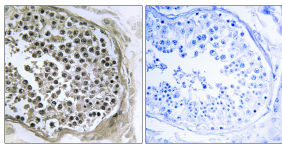
WB: 1: 500 - 1: 2000

IHC: 1: 100 - 1: 300

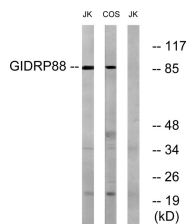
ELISA: 1: 40000

Not yet tested in other applications.

Images



Immunohistochemistry analysis of paraffin-embedded human testis tissue, using GIDRP88 Antibody. The picture on the right is blocked with the synthesized peptide.



Western blot analysis of lysates from Jurkat and COS cells, using GIDRP88 Antibody. The lane on the right is blocked with the synthesized peptide.

Storage

-20°C for one year

501 Changsheng S Rd, Nanhu Dist, Jiaxing, Zhejiang, China

Tel: 86 21 31007137 | E-mail: save@bt-laboratory.com | www.bt-laboratory.com