

GIMAP2 Polyclonal Antibody

Description

Product type	Primary Antibody
Code	BT-AP03566
Host	Rabbit
Isotype	IgG
Size	20ul, 50ul, 100ul
Immunogen	The antiserum was produced against synthesized peptide derived from human GIMAP2. AA range:201-250
Mol wt	38017
Species reactivity	Human
Clonality	Polyclonal
Recommended application	WB, IF, ELISA
Concentration	1 mg/ml
Full name	GIMAP2 Antibody
Synonyms	GIMAP2; IMAP2; GTPase IMAP family member 2; Immunity-associated protein 2; hIMAP2

This product is for research use only, not for use in human, therapeutic or diagnostic procedure.

Background

GIMAP2 encodes GTPase IMAP family member 2 belonging to the GTP-binding superfamily and to the immuno-associated nucleotide (IAN) subfamily of nucleotide-binding proteins. In humans, the IAN subfamily genes are located in a cluster at 7q36.1.

Recommended Dilution

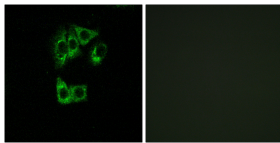
WB: 1: 500 - 1: 2000

IF: 1: 200 - 1: 1000

ELISA: 1: 20000

Not yet tested in other applications.

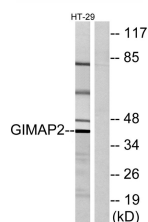
Images



Immunofluorescence analysis of A549 cells, using GIMAP2 Antibody. The picture on the right is blocked with the synthesized peptide.



Western Blot analysis of various cells using GIMAP2 Polyclonal Antibody



Western blot analysis of lysates from HT-29 cells, using GIMAP2 Antibody. The lane on the right is blocked with the synthesized peptide.

Storage

-20°C for one year

501 Changsheng S Rd, Nanhu Dist, Jiaxing, Zhejiang, China

Tel: 86 21 31007137 | E-mail: save@bt-laboratory.com | www.bt-laboratory.com