

GIMAP4 Polyclonal Antibody

Description

Product type	Primary Antibody
Code	BT-AP03567
Host	Rabbit
Isotype	IgG
Size	20ul, 50ul, 100ul
Immunogen	The antiserum was produced against synthesized peptide derived from human GIMAP4. AA range:131-180
Mol wt	37534
Species reactivity	Human
Clonality	Polyclonal
Recommended application	WB, IHC-p, ELISA
Concentration	1 mg/ml
Full name	GIMAP4 Antibody
Synonyms	GIMAP4; IAN1; IMAP4; MSTP062; GTPase IMAP family member 4; Immunity-associated nucleotide 1 protein; IAN-1; hIAN1; Immunity-associated protein 4

This product is for research use only, not for use in human, therapeutic or diagnostic procedure.

Background

GIMAP4 encodes GTPase IMAP family member 4 belonging to the GTP-binding superfamily and to the immuno-associated nucleotide (IAN) subfamily of nucleotide-binding proteins. GTPase IMAP family member 4 may be negatively regulated by T-cell acute lymphocytic leukemia 1 (TAL1). In humans, the IAN subfamily genes are located in a cluster at 7q36.1.

Recommended Dilution

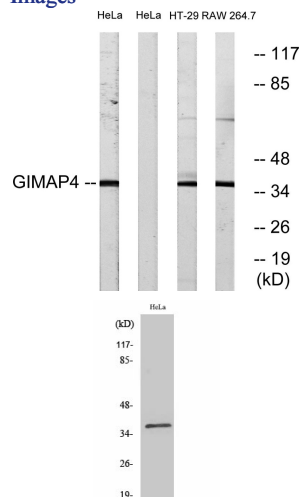
WB: 1: 500 - 1: 2000

IHC: 1: 100 - 1: 300

ELISA: 1: 5000

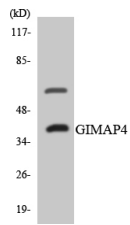
Not yet tested in other applications.

Images



Western blot analysis of lysates from HeLa, HT-29, and RAW264.7 cells, using GIMAP4 Antibody. The lane on the right is blocked with the synthesized peptide.

Western Blot analysis of various cells using GIMAP4 Polyclonal Antibody



Western blot analysis of the lysates from COLO205 cells using GIMAP4 antibody.

Storage

-20°C for one year

501 Changsheng S Rd, Nanhu Dist, Jiaxing, Zhejiang, China

Tel: 86 21 31007137 | E-mail: save@bt-laboratory.com | www.bt-laboratory.com