

GIPR Polyclonal Antibody

Description

Product type	Primary Antibody
Code	BT-AP03569
Host	Rabbit
Isotype	IgG
Size	20ul, 50ul, 100ul
Immunogen	The antiserum was produced against synthesized peptide derived from human GIPR. AA range:93-142
Mol wt	53157
Species reactivity	Human
Clonality	Polyclonal
Recommended application	WB, IHC-p, IF, ELISA
Concentration	1 mg/ml
Full name	GIPR Antibody
Synonyms	GIPR; Gastric inhibitory polypeptide receptor; GIP-R; Glucose-dependent insulinotropic polypeptide receptor

This product is for research use only, not for use in human, therapeutic or diagnostic procedure.

Background

GIPR encodes Gastric inhibitory polypeptide receptor for gastric inhibitory polypeptide (GIP), which was originally identified as an activity in gut extracts that inhibited gastric acid secretion and gastrin release, but subsequently was demonstrated to stimulate insulin release in the presence of elevated glucose. Mice lacking GIPR exhibit higher blood glucose levels with impaired initial insulin response after oral glucose load. Defect in GIPR thus may contribute to the pathogenesis of diabetes.

Recommended Dilution

WB: 1: 500 - 1: 2000

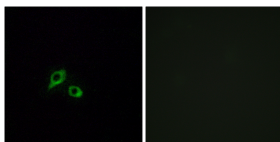
IHC: 1: 100 - 1: 300

IF: 1: 200 - 1: 1000

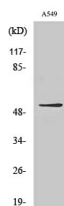
ELISA: 1: 20000

Not yet tested in other applications.

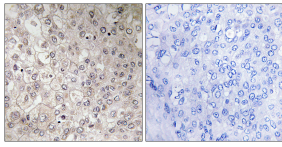
Images



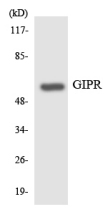
Immunofluorescence analysis of MCF7 cells, using GIPR Antibody. The picture on the right is blocked with the synthesized peptide.



Western Blot analysis of various cells using GIPR Polyclonal Antibody



Immunohistochemistry analysis of paraffin-embedded human liver carcinoma tissue, using GIPR Antibody. The picture on the right is blocked with the synthesized peptide.



Western blot analysis of the lysates from HT-29 cells using GIPR antibody.

Storage

-20°C for one year

501 Changsheng S Rd, Nanhu Dist, Jiaxing, Zhejiang, China

Tel: 86 21 31007137 | E-mail: save@bt-laboratory.com | www.bt-laboratory.com