

GIT1 Polyclonal Antibody

Description

Product type	Primary Antibody
Code	BT-AP03571
Host	Rabbit
Isotype	IgG
Size	20ul, 50ul, 100ul
Immunogen	The antiserum was produced against synthesized peptide derived from human GIT1. AA range:561-610
Mol wt	84341
Species reactivity	Human, Mouse, Rat
Clonality	Polyclonal
Recommended application	WB, IHC-p, ELISA
Concentration	1 mg/ml
Full name	GIT1 Antibody
Synonyms	GIT1; ARF GTPase-activating protein GIT1; ARF GAP GIT1; Cool-associated and tyrosine-phosphorylated protein 1; CAT-1; CAT1; G protein-coupled receptor kinase-interactor 1; GRK-interacting protein 1

This product is for research use only, not for use in human, therapeutic or diagnostic procedure.

Background

ARF GTPase-activating protein GIT1 is an enzyme that in humans is encoded by the GIT1 gene. GIT1 contains an ARFGAP domain, Anykrin repeats and a GRK-interacting domain. The Arf-GAP domain, which enables it to act as a GTPase activating protein (GAP) for the Arf family of GTPases, has been shown to be involved in phosphorylation and inhibition of the ADRB2. If synaptic localization of GIT1 is disturbed, then this is known to affect dendritic spine morphology and formation---this is thought to occur through the Rac1/PAK1/LIMK/CFL1 pathway.

Recommended Dilution

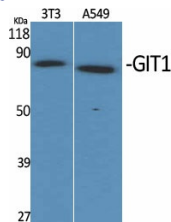
WB: 1: 500 - 1: 2000

IHC: 1: 100 - 1: 300

ELISA: 1: 20000

Not yet tested in other applications.

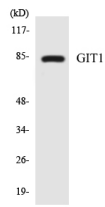
Images



Western Blot analysis of various cells using GIT1 Polyclonal Antibody



Western Blot analysis of HepG2 cells using GIT1 Polyclonal Antibody



Western blot analysis of the lysates from 293 cells using GIT1 antibody.

Storage

-20°C for one year

501 Changsheng S Rd, Nanhu Dist, Jiaxing, Zhejiang, China

Tel: 86 21 31007137 | E-mail: save@bt-laboratory.com | www.bt-laboratory.com