

GK1/3 Polyclonal Antibody

Description

Product type	Primary Antibody
Code	BT-AP03574
Host	Rabbit
Isotype	IgG
Size	20ul, 50ul, 100ul
Immunogen	The antiserum was produced against synthesized peptide derived from human GK3. AA range:21-70
Mol wt	60570
Species reactivity	Human
Clonality	Polyclonal
Recommended application	WB, IHC-p, ELISA
Concentration	1 mg/ml
Full name	GK1/3 Antibody
Synonyms	GK; Glycerol kinase; GK; Glycerokinase; ATP:glycerol 3-phosphotransferase; GK3P; GKP3; GKTB; Putative glycerol kinase 3; GK 3; Glycerokinase 3; ATP:glycerol 3-phosphotransferase 3; Glycerol kinase; t

This product is for research use only, not for use in human, therapeutic or diagnostic procedure.

Background

GK3P is a Pseudogene. Putative glycerol kinase 3 is a key enzyme in the regulation of glycerol uptake and metabolism.

Recommended Dilution

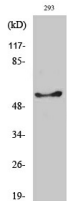
WB: 1: 500 - 1: 2000

IHC: 1: 100 - 1: 300

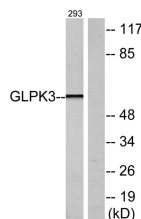
ELISA: 1: 40000

Not yet tested in other applications.

Images



Western Blot analysis of various cells using GK1/3 Polyclonal Antibody



Western blot analysis of lysates from 293 cells, using GK3 Antibody. The lane on the right is blocked with the synthesized peptide.

Storage

-20°C for one year

