

GK2 Polyclonal Antibody

Description

Product type	Primary Antibody
Code	BT-AP03575
Host	Rabbit
Isotype	IgG
Size	20ul, 50ul, 100ul
Immunogen	The antiserum was produced against synthesized peptide derived from human GK2. AA range:281-330
Mol wt	60610
Species reactivity	Human
Clonality	Polyclonal
Recommended application	WB, IHC-p, IF, ELISA
Concentration	1 mg/ml
Full name	GK2 Antibody
Synonyms	GK2; GKP2; GKTA; Glycerol kinase 2; GK 2; Glycerokinase 2; ATP:glycerol 3-phosphotransferase 2; Glycerol kinase; testis specific 2

This product is for research use only, not for use in human, therapeutic or diagnostic procedure.

Background

GK2 is a Protein Coding gene. Glycerol kinase 2 is a key enzyme in the regulation of glycerol uptake and metabolism. Diseases associated with GK2 include glycerol kinase deficiency and x-linked adrenal hypoplasia congenita. Among its related pathways are Metabolism and Regulation of lipid metabolism by Peroxisome proliferator-activated receptor alpha (PPARalpha). Gene Ontology (GO) annotations related to this gene include phosphotransferase activity, alcohol group as acceptor and glycerol kinase activity. An important paralog of this gene is GK.

Recommended Dilution

WB: 1: 500 - 1: 2000

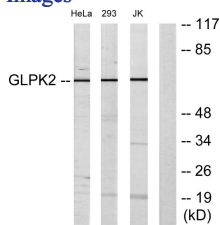
IHC: 1: 100 - 1: 300

IF: 1: 200 - 1: 1000

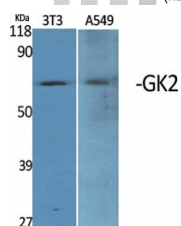
ELISA: 1: 20000

Not yet tested in other applications.

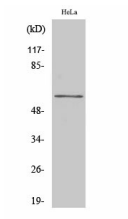
Images



Western blot analysis of lysates from HeLa, 293, and Jurkat cells, using GK2 Antibody. The lane on the right is blocked with the synthesized peptide.



Western Blot analysis of various cells using GK2 Polyclonal Antibody



Western Blot analysis of Jurkat cells using GK2 Polyclonal Antibody

Storage

-20°C for one year

501 Changsheng S Rd, Nanhu Dist, Jiaxing, Zhejiang, China

Tel: 86 21 31007137 | E-mail: save@bt-laboratory.com | www.bt-laboratory.com