

GLI-3 Polyclonal Antibody

Description

Product type	Primary Antibody
Code	BT-AP03582
Host	Rabbit
Isotype	IgG
Size	20ul, 50ul, 100ul
Immunogen	The antiserum was produced against synthesized peptide derived from human GLI-3. AA range:11-60
Mol wt	13553
Species reactivity	Human, Mouse, Rat
Clonality	Polyclonal
Recommended application	IHC-p, IF, ELISA
Concentration	1 mg/ml
Full name	GLI-3 Antibody
Synonyms	GLI3; Transcriptional activator GLI3; GLI3 form of 190 kDa; GLI3-190; GLI3 full length protein; GLI3FL

This product is for research use only, not for use in human, therapeutic or diagnostic procedure.

Background

GLI3 encodes GLI family zinc finger 3 which belongs to the C2H2-type zinc finger proteins subclass of the Gli family. They are characterized as DNA-binding transcription factors and are mediators of Sonic hedgehog (Shh) signaling. The protein encoded by this gene localizes in the cytoplasm and activates patched Drosophila homolog (PTCH) gene expression. It is also thought to play a role during embryogenesis. Mutations in this gene have been associated with several diseases, including Greig cephalopolysyndactyly syndrome, Pallister-Hall syndrome, preaxial polydactyly type IV, and postaxial polydactyly types A1 and B.

Recommended Dilution

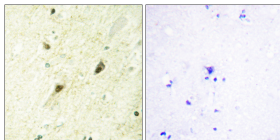
IHC: 1: 100 - 1: 300

IF: 1: 200 - 1: 1000

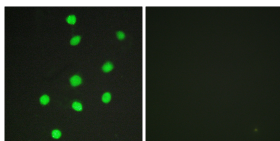
ELISA: 1: 10000

Not yet tested in other applications.

Images



Immunohistochemistry analysis of paraffin-embedded human brain tissue, using GLI-3 Antibody. The picture on the right is blocked with the synthesized peptide.



Immunofluorescence analysis of HepG2 cells, using GLI-3 Antibody. The picture on the right is blocked with the synthesized peptide.

Storage

-20°C for one year