

GLK Polyclonal Antibody

Description

Product type	Primary Antibody
Code	BT-AP03583
Host	Rabbit
Isotype	IgG
Size	20ul, 50ul, 100ul
Immunogen	The antiserum was produced against synthesized peptide derived from human MAP4K3. AA range:10-59
Mol wt	101316
Species reactivity	Human, Mouse, Rat
Clonality	Polyclonal
Recommended application	WB, ELISA
Concentration	1 mg/ml
Full name	GLK Antibody
Synonyms	MAP4K3; RAB8IPL1; Mitogen-activated protein kinase kinase kinase kinase 3; Germinal center kinase-related protein kinase; GLK; MAPK/ERK kinase kinase kinase 3; MEK kinase kinase 3; MEKKK 3

This product is for research use only, not for use in human, therapeutic or diagnostic procedure.

Background

MAP4K3 encodes a member of the mitogen-activated protein kinase kinase kinase family. Mitogen-activated protein kinase kinase kinase kinase 3 activates key effectors in cell signalling, among them c-Jun. Alternatively spliced transcripts encoding multiple isoforms have been observed for this gene.

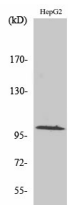
Recommended Dilution

WB: 1: 500 - 1: 2000

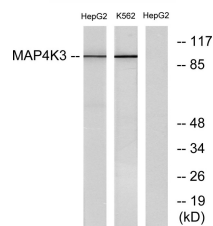
ELISA: 1: 20000

Not yet tested in other applications.

Images



Western Blot analysis of various cells using GLK Polyclonal Antibody



Western blot analysis of lysates from HepG2 and K562 cells, using MAP4K3 Antibody. The lane on the right is blocked with the synthesized peptide.

Storage

-20°C for one year

501 Changsheng S Rd, Nanhu Dist, Jiaxing, Zhejiang, China

Tel: 86 21 31007137 | E-mail: save@bt-laboratory.com | www.bt-laboratory.com