

Glucagon Receptor Polyclonal Antibody

Description

Product type	Primary Antibody
Code	BT-AP03590
Host	Rabbit
Isotype	IgG
Size	20ul, 50ul, 100ul
Immunogen	The antiserum was produced against synthesized peptide derived from human GLR. AA range:95-144
Mol wt	54009
Species reactivity	Human, Mouse, Rat
Clonality	Polyclonal
Recommended application	WB, IF, ELISA
Concentration	1 mg/ml
Full name	Glucagon Receptor Antibody
Synonyms	GCGR; Glucagon receptor; GL-R

This product is for research use only, not for use in human, therapeutic or diagnostic procedure.

Background

Glucagon receptor encoded by GCGR is a glucagon receptor that is important in controlling blood glucose levels. Defects in this gene are a cause of non-insulin-dependent diabetes mellitus (NIDDM).

Recommended Dilution

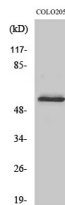
WB: 1: 500 - 1: 2000

IF: 1: 200 - 1: 1000

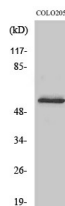
ELISA: 1: 5000

Not yet tested in other applications.

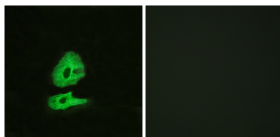
Images



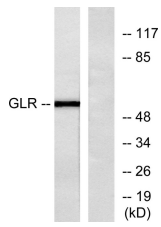
Western Blot analysis of various cells using Glucagon Receptor Polyclonal Antibody



Western Blot analysis of COLO205 cells using Glucagon Receptor Polyclonal Antibody



Immunofluorescence analysis of HeLa cells, using GLR Antibody. The picture on the right is blocked with the synthesized peptide.



Western blot analysis of lysates from COLO205 cells, using GLR Antibody. The lane on the right is blocked with the synthesized peptide.

Storage

-20°C for one year

501 Changsheng S Rd, Nanhu Dist, Jiaxing, Zhejiang, China

Tel: 86 21 31007137 | E-mail: save@bt-laboratory.com | www.bt-laboratory.com