

Glucosidase II Alpha Polyclonal Antibody

Description

Product type	Primary Antibody
Code	BT-AP03592
Host	Rabbit
Isotype	IgG
Size	20ul, 50ul, 100ul
Immunogen	The antiserum was produced against synthesized peptide derived from human GANAB. AA range:242-291
Mol wt	106874
Species reactivity	Human, Mouse
Clonality	Polyclonal
Recommended application	WB, IHC-p, ELISA
Concentration	1 mg/ml
Full name	Glucosidase IIalpha Antibody
Synonyms	GANAB; G2AN; KIAA0088; Neutral alpha-glucosidase AB; Alpha-glucosidase 2; Glucosidase II subunit alpha

This product is for research use only, not for use in human, therapeutic or diagnostic procedure.

Background

GANAB encodes the alpha subunit of glucosidase II and a member of the glycosyl hydrolase 31 family of proteins. The heterodimeric enzyme glucosidase II plays a role in protein folding and quality control by cleaving glucose residues from immature glycoproteins in the endoplasmic reticulum. Expression of the encoded protein is elevated in lung tumor tissue and in response to UV irradiation. Mutations in this gene cause autosomal-dominant polycystic kidney and liver disease.

Recommended Dilution

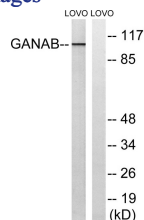
WB: 1: 500 - 1: 2000

IHC: 1: 100 - 1: 300

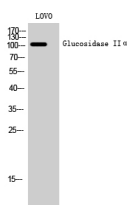
ELISA: 1: 5000

Not yet tested in other applications.

Images



Western blot analysis of lysates from LOVO cells, using GANAB Antibody. The lane on the right is blocked with the synthesized peptide.



Western Blot analysis of LOVO cells using Glucosidase II α Polyclonal Antibody

Storage

-20°C for one year

501 Changsheng S Rd, Nanhu Dist, Jiaxing, Zhejiang, China

Tel: 86 21 31007137 | E-mail: save@bt-laboratory.com | www.bt-laboratory.com