

GluR-Delta1 Polyclonal Antibody

Description

Product type	Primary Antibody
Code	BT-AP03601
Host	Rabbit
Isotype	IgG
Size	20ul, 50ul, 100ul
Immunogen	The antiserum was produced against synthesized peptide derived from human GRID1. AA range:831-880
Mol wt	112131
Species reactivity	Human, Mouse, Rat
Clonality	Polyclonal
Recommended application	WB, IHC-p, ELISA
Concentration	1 mg/ml
Full name	GluR-delta1 Antibody
Synonyms	GRID1; KIAA1220; Glutamate receptor delta-1 subunit; GluR delta-1 subunit

This product is for research use only, not for use in human, therapeutic or diagnostic procedure.

Background

GRID1 encodes a subunit of glutamate receptor channels. These channels mediate most of the fast excitatory synaptic transmission in the central nervous system and play key roles in synaptic plasticity.

Recommended Dilution

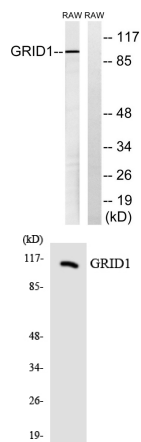
WB: 1: 500 - 1: 2000

IHC: 1: 100 - 1: 300

ELISA: 1: 40000

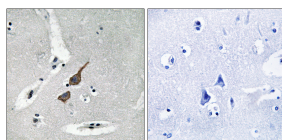
Not yet tested in other applications.

Images



Western blot analysis of lysates from RAW264.7 cells, using GRID1 Antibody. The lane on the right is blocked with the synthesized peptide.

Western blot analysis of the lysates from RAW264.7 cells using GRID1 antibody.



Immunohistochemistry analysis of paraffin-embedded human brain tissue, using GRID1 Antibody. The picture on the right is blocked with the synthesized peptide.

Storage

-20°C for one year

501 Changsheng S Rd, Nanhu Dist, Jiaxing, Zhejiang, China

Tel: 86 21 31007137 | E-mail: save@bt-laboratory.com | www.bt-laboratory.com