

Glut3 Polyclonal Antibody

Description

Product type	Primary Antibody
Code	BT-AP03604
Host	Rabbit
Isotype	IgG
Size	20ul, 50ul, 100ul
Immunogen	The antiserum was produced against synthesized peptide derived from human GLUT3. AA range:447-496
Mol wt	53924
Species reactivity	Human
Clonality	Polyclonal
Recommended application	WB, IHC-p, ELISA
Concentration	1 mg/ml
Full name	Glut3 Antibody
Synonyms	SLC2A3; GLUT3; Solute carrier family 2; facilitated glucose transporter member 3; Glucose transporter type 3, brain; GLUT-3

This product is for research use only, not for use in human, therapeutic or diagnostic procedure.

Background

GLUT3 (SLC2A3) belongs to the glucose transporter family (GLUTs) which mediates the transport of glucose across cellular membranes in mammalian cells. There are three subclasses within GLUTs: class I comprises the classical transporters GLUT1-4 and GLUT14; class II contains the "odd" isoforms GLUT5, 7, 9, and 11; the isoforms GLUT6, 8, 10, 12 and the proton driven myoinositol transporter HMIT (GLUT13) belong to class III. GLUT3 is considered as a neuron-specific glucose transporter because of its dominant expression in the brain in various species. However, besides the brain GLUT3 is also expressed in tissues with high demand for glucose such as sperm, preimplantation embryos, circulating white blood cells, and an array of carcinoma cell lines. Recently GLUT3 has been identified as a sensitive and specific marker for embryonal carcinomas and yolk tumors. The GLUT14 is believed to be the duplicate gene of GLUT3 given to the high identity in sequence between them. This antibody was generated against the internal region of human GLUT3 and may cross-react with GLUT14.

Recommended Dilution

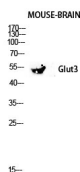
WB: 1: 500 - 1: 2000

IHC: 1: 100 - 1: 300

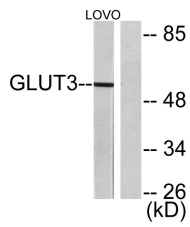
ELISA: 1: 10000

Not yet tested in other applications.

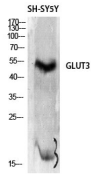
Images



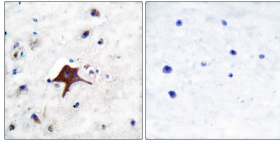
Western blot analysis of Mouse-kidney lysis using Glut3 antibody. Antibody was diluted at 1:2000



Western blot analysis of lysates from LOVO cells, using GLUT3 Antibody. The lane on the right is blocked with the synthesized peptide.



Western Blot analysis of SH-SY5Y cells using Glut3 Polyclonal Antibody diluted at 1:2000



Immunohistochemistry analysis of paraffin-embedded human brain tissue, using GLUT3 Antibody. The picture on the right is blocked with the synthesized peptide.

Storage

-20°C for one year

501 Changsheng S Rd, Nanhu Dist, Jiaxing, Zhejiang, China

Tel: 86 21 31007137 | E-mail: save@bt-laboratory.com | www.bt-laboratory.com