

Glut5 Polyclonal Antibody

Description

Product type	Primary Antibody
Code	BT-AP03607
Host	Rabbit
Isotype	IgG
Size	20ul, 50ul, 100ul
Immunogen	The antiserum was produced against synthesized peptide derived from the N-terminal region of human SLC2A5. AA range:31-80
Mol wt	55110
Species reactivity	Human
Clonality	Polyclonal
Recommended application	WB, ELISA
Concentration	1 mg/ml
Full name	Glut5 Antibody
Synonyms	SLC2A5; GLUT5; Solute carrier family 2, facilitated glucose transporter member 5; Fructose transporter; Glucose transporter type 5, small intestine; GLUT-5

This product is for research use only, not for use in human, therapeutic or diagnostic procedure.

Background

Solute carrier family 2 facilitated glucose transporter member 5 encoded by SLC2A5 is a fructose transporter responsible for fructose uptake by the small intestine. The encoded protein also is necessary for the increase in blood pressure due to high dietary fructose consumption.

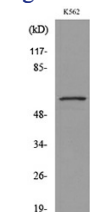
Recommended Dilution

WB: 1: 500 - 1: 2000

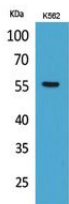
ELISA: 1: 20000

Not yet tested in other applications.

Images



Western blot analysis of lysate from K562 cells, using SLC2A5 Antibody.



Western Blot analysis of K562 cells using Glut5 Polyclonal Antibody. Secondary antibody was diluted at 1:20000

Storage

-20°C for one year

501 Changsheng S Rd, Nanhu Dist, Jiaxing, Zhejiang, China

Tel: 86 21 31007137 | E-mail: save@bt-laboratory.com | www.bt-laboratory.com