

## Glycerate Kinase Polyclonal Antibody

### Description

|                         |   |
|-------------------------|---|
| Product type            | Primary Antibody  |
| Code                    | BT-AP03609  |
| Host                    | Rabbit  |
| Isotype                 | IgG   |
| Size                    | 20ul, 50ul, 100ul   |
| Immunogen               | The antiserum was produced against synthesized peptide derived from human GLCTK. AA range:101-150 |
| Mol wt                  | 55253   |
| Species reactivity      | Human, Mouse, Rat   |
| Clonality               | Polyclonal  |
| Recommended application | WB, IHC-p, IF, ELISA  |
| Concentration           | 1 mg/ml   |
| Full name               | Glycerate Kinase Antibody   |
| Synonyms                | GLYCTK; HBEBP4; LP5910; Glycerate kinase; HBeAg-binding protein 4                                 |

This product is for research use only, not for use in human, therapeutic or diagnostic procedure.

### Background

This locus encodes a member of the glycerate kinase type-2 family. The encoded enzyme catalyzes the phosphorylation of (R)-glycerate and may be involved in serine degradation and fructose metabolism. Decreased activity of the encoded enzyme may be associated with the disease D-glyceric aciduria. Alternatively spliced transcript variants have been described.

### Recommended Dilution

WB: 1: 500 - 1: 2000

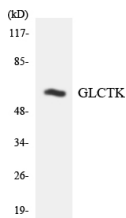
IHC: 1: 100 - 1: 300

IF: 1: 200 - 1: 1000

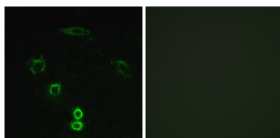
ELISA: 1: 20000

Not yet tested in other applications.

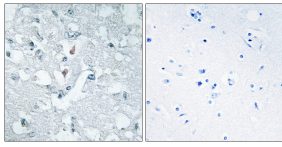
### Images



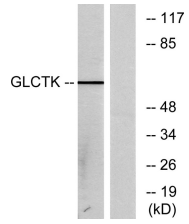
Western blot analysis of the lysates from HUVEC cells using GLCTK antibody.



Immunofluorescence analysis of A549 cells, using GLCTK Antibody. The picture on the right is blocked with the synthesized peptide.



Immunohistochemistry analysis of paraffin-embedded human brain tissue, using GLCTK Antibody. The picture on the right is blocked with the synthesized peptide.



Western blot analysis of lysates from NIH/3T3 cells, using GLCTK Antibody. The lane on the right is blocked with the synthesized peptide.

### Storage

-20°C for one year

501 Changsheng S Rd, Nanhu Dist, Jiaxing, Zhejiang, China

Tel: 86 21 31007137 | E-mail: [save@bt-laboratory.com](mailto:save@bt-laboratory.com) | [www.bt-laboratory.com](http://www.bt-laboratory.com)