

## Glycogen Synthase 1 Polyclonal Antibody

### Description

<b>Product type</b>	Primary Antibody
<b>Code</b>	BT-AP03610
<b>Host</b>	Rabbit
<b>Isotype</b>	IgG
<b>Size</b>	20ul, 50ul, 100ul
<b>Immunogen</b>	The antiserum was produced against synthesized peptide derived from human Glycogen Synthase. AA range:611-660
<b>Mol wt</b>	83786
<b>Species reactivity</b>	Human, Mouse
<b>Clonality</b>	Polyclonal
<b>Recommended application</b>	WB, ELISA
<b>Concentration</b>	1 mg/ml
<b>Full name</b>	Glycogen Synthase 1 Antibody
<b>Synonyms</b>	GYS1; GYS; Glycogen [starch] synthase; muscle

**This product is for research use only, not for use in human, therapeutic or diagnostic procedure.**

### Background

The glycogen synthase 1 encoded by GYS1 catalyzes the addition of glucose monomers to the growing glycogen molecule through the formation of alpha-1,4-glycoside linkages. Mutations in GYS1 are associated with muscle glycogen storage disease. Alternatively spliced transcript variants encoding different isoforms have been found for GYS1.

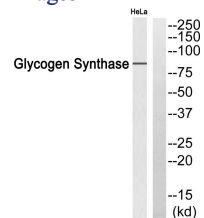
### Recommended Dilution

WB: 1: 500 - 1: 2000

ELISA: 1: 10000

Not yet tested in other applications.

### Images



Western blot analysis of Glycogen Synthase Antibody. The lane on the right is blocked with the Glycogen Synthase peptide.

### Storage

-20°C for one year