

Glycogen Synthase 1 Polyclonal Antibody

Description

Product type	Primary Antibody
Code	BT-AP03611
Host	Rabbit
Isotype	IgG
Size	20ul, 50ul, 100ul
Immunogen	The antiserum was produced against synthesized peptide derived from human Glycogen Synthase. AA range:621-670
Mol wt	83786
Species reactivity	Human, Mouse, Rat
Clonality	Polyclonal
Recommended application	WB, IHC-p, ELISA
Concentration	1 mg/ml
Full name	Glycogen Synthase 1 Antibody
Synonyms	GYS1; GYS; Glycogen [starch] synthase; muscle

This product is for research use only, not for use in human, therapeutic or diagnostic procedure.

Background

The glycogen synthase 1 encoded by GYS1 catalyzes the addition of glucose monomers to the growing glycogen molecule through the formation of alpha-1,4-glycoside linkages. Mutations in GYS1 are associated with muscle glycogen storage disease. Alternatively spliced transcript variants encoding different isoforms have been found for GYS1.

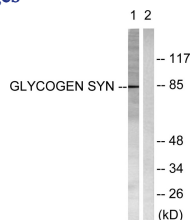
Recommended Dilution

WB: 1: 500 - 1: 2000

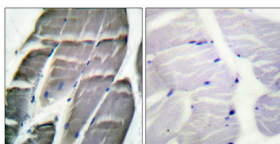
ELISA: 1: 10000

Not yet tested in other applications.

Images



Western blot analysis of lysates from HeLa cells, treated with Serum 20% 30', using Glycogen Synthase Antibody. The lane on the right is blocked with the synthesized peptide.



Immunohistochemical analysis of paraffin-embedded Human skeletal muscle. Antibody was diluted at 1:100(4° overnight). High-pressure and temperature Tris-EDTA,pH8.0 was used for antigen retrieval. Negative contrl (right) obtained from antibody was pre-absorbed by immunogen peptide.

Storage

-20°C for one year