

Glypican-5 Polyclonal Antibody

Description

Product type	Primary Antibody
Code	BT-AP03614
Host	Rabbit
Isotype	IgG
Size	20ul, 50ul, 100ul
Immunogen	Synthesized peptide derived from the Internal region of human Glypican-5.
Mol wt	63707
Species reactivity	Human, Mouse, Rat
Clonality	Polyclonal
Recommended application	WB, ELISA
Concentration	1 mg/ml
Full name	Glypican-5 Antibody
Synonyms	GPC5; Glypican-5

This product is for research use only, not for use in human, therapeutic or diagnostic procedure.

Background

Cell surface heparan sulfate proteoglycans are composed of a membrane-associated protein core substituted with a variable number of heparan sulfate chains. Members of the glypican-related integral membrane proteoglycan family (GRIPS) contain a core protein anchored to the cytoplasmic membrane via a glycosyl phosphatidylinositol linkage. These proteins may play a role in the control of cell division and growth regulation.

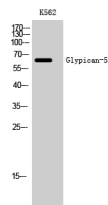
Recommended Dilution

WB: 1: 500 - 1: 2000

ELISA: 1: 40000

Not yet tested in other applications.

Images



Western Blot analysis of K562 cells using Glypican-5 Polyclonal Antibody

Storage

-20°C for one year