

MKK7(Phospho-Ser271/Thr275) Rabbit Polyclonal Antibody

Description

Product type	Primary Antibody
Code	BT-AP03618
Host	Rabbit
Isotype	IgG
Size	100ul, 50ul, 20ul
Immunogen	Synthesized phospho peptide around human MKK7 (Ser271 and Thr275)
Mol wt	N/A
Species reactivity	Human, Rat, Mouse
Clonality	Polyclonal
Recommended application	WB
Concentration	1 mg/ml
Full name	MKK7
Synonyms	MKK7 ;Ser271/Thr275; Dual specificity mitogen-activated protein kinase kinase 7; MAP kinase kinase 7; MAPKK 7; EC 2.7.12.2; JNK-activating kinase 2; MAPK/ERK kinase 7; MEK 7; Stress-activated protein kinase kinase 4; SAPK kinase 4; SAPKK-4; SAPKK4; c-Jun N-terminal kinase kinase 2; JNK kinase 2; JNKK 2

This product is for research use only, not for use in human, therapeutic or diagnostic procedure.

Background

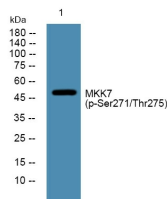
The protein encoded by this gene is a dual specificity protein kinase that belongs to the MAP kinase kinase family. This kinase specifically activates MAPK8/JNK1 and MAPK9/JNK2 and this kinase itself is phosphorylated and activated by MAP kinase kinase kinases including MAP3K1/MEKK1| MAP3K2/MEKK2|MAP3K3/MEKK5 and MAP4K2/GCK. This kinase is involved in the signal transduction mediating the cell responses to proinflammatory cytokines and environmental stresses. Alternative splicing results in multiple transcript variants.

Recommended Dilution

WB: 1: 1000 - 1: 2000

Not yet tested in other applications.

Images



Western blot analysis of lysates from KB cells, primary antibody was diluted at 1:1000, 4°C overnight

Storage

-20°C for 1 year