

GMF-Beta Polyclonal Antibody

Description

Product type	Primary Antibody
Code	BT-AP03619
Host	Rabbit
Isotype	IgG
Size	20ul, 50ul, 100ul
Immunogen	The antiserum was produced against synthesized peptide derived from the Internal region of human GMFB. AA range:1-50
Mol wt	16713
Species reactivity	Human, Mouse, Rat
Clonality	Polyclonal
Recommended application	WB, IHC-p, ELISA
Concentration	1 mg/ml
Full name	GMF-beta Antibody
Synonyms	GMFB; Glia maturation factor beta; GMF-beta

This product is for research use only, not for use in human, therapeutic or diagnostic procedure.

Background

This protein causes differentiation of brain cells, stimulation of neural regeneration, and inhibition of proliferation of tumor cells.

Recommended Dilution

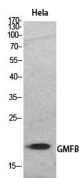
WB: 1: 500 - 1: 2000

IHC-p: 1: 100 - 1: 300

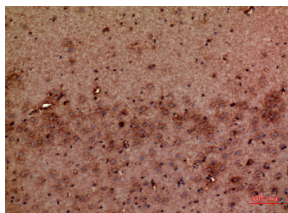
ELISA: 1: 20000

Not yet tested in other applications.

Images



Western Blot analysis of HeLa cells using GMF- β Polyclonal Antibody. Secondary antibody was diluted at 1:20000



Immunohistochemical analysis of paraffin-embedded mouse-brain, antibody was diluted at 1:100

Storage

-20°C for one year

