

GNL3L Polyclonal Antibody

Description

Product type	Primary Antibody
Code	BT-AP03631
Host	Rabbit
Isotype	IgG
Size	20ul, 50ul, 100ul
Immunogen	The antiserum was produced against synthesized peptide derived from human GNL3L. AA range:71-120
Mol wt	65573
Species reactivity	Human
Clonality	Polyclonal
Recommended application	WB, IHC-p, ELISA
Concentration	1 mg/ml
Full name	GNL3L Antibody
Synonyms	GNL3L; Guanine nucleotide-binding protein-like 3-like protein

This product is for research use only, not for use in human, therapeutic or diagnostic procedure.

Background

Guanine nucleotide-binding protein-like 3-like protein encoded by GNL3L appears to be a nucleolar GTPase that is essential for ribosomal pre-rRNA processing and cell proliferation. Two transcript variants encoding the same protein have been found for this gene.

Recommended Dilution

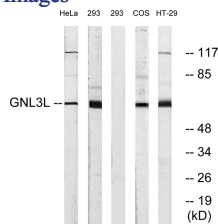
WB: 1: 500 - 1: 2000

IHC: 1: 100 - 1: 300

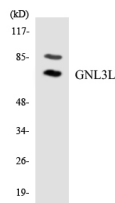
ELISA: 1: 5000

Not yet tested in other applications.

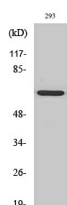
Images



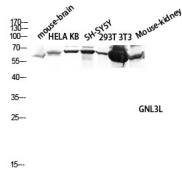
Western blot analysis of lysates from 293, HeLa, and HT-29 cells, using GNL3L Antibody. The lane on the right is blocked with the synthesized peptide.



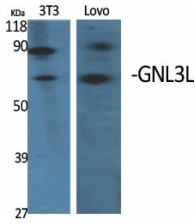
Western blot analysis of the lysates from HUVEC cells using GNL3L antibody.



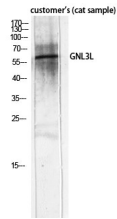
Western Blot analysis of HT29 cells using GNL3L Polyclonal Antibody diluted at 1:2000 cells nucleus.



Western blot analysis of mouse-brain HELA KB SH-SY5Y 293T 3T3 Mouse-kidney lysis using GNL3L antibody. Antibody was diluted at 1:2000 cells nucleus.



Western Blot analysis of various cells using GNL3L Polyclonal Antibody diluted at 1:2000 cells nucleus.



Western Blot analysis of customer's (cat sample) using GNL3L Polyclonal Antibody diluted at 1:2000 cells nucleus.

Storage

-20°C for one year

501 Changsheng S Rd, Nanhu Dist, Jiaxing, Zhejiang, China

Tel: 86 21 31007137 | E-mail: save@bt-laboratory.com | www.bt-laboratory.com